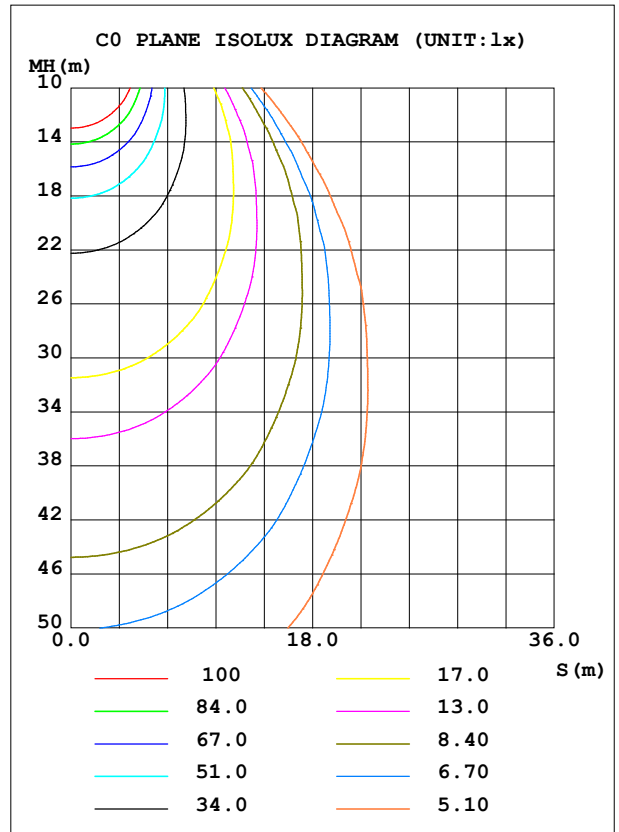
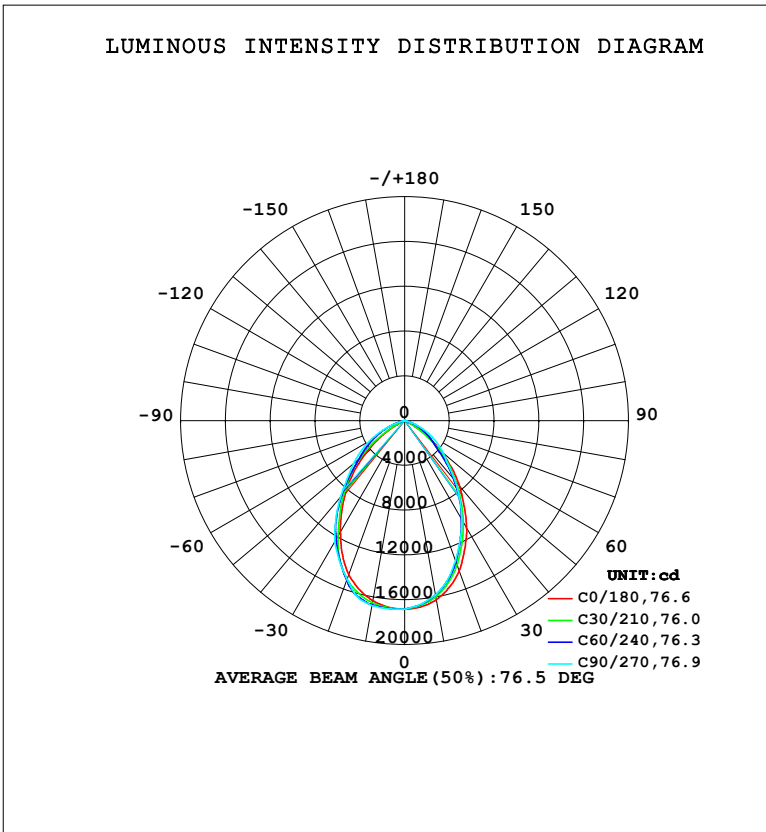


LUMINAIRE PHOTOMETRIC TEST REPORT

| | | |
|---|------------------------|------------------|
| Test:U:219.70V I:0.8850A P:188.90W PF:0.9710 Freq:50.00Hz Lamp Flux:26868.4x1 lm | | |
| NAME: Uranus High Light | TYPE: GK-TWX-0200-N01S | Shielding Angle: |
| SPEC.: GK-TWX-0200-N01S | | |
| MFR.: | | |

| DATA OF LAMP | | PHOTOMETRIC DATA | | | |
|-------------------|------------------|------------------|--------|--------------------------|----------|
| MODEL | GK-TWX-0200-N01S | Imax (cd) | 16869 | S/MH (C0/180) | 1.06 |
| NOMINAL POWER (W) | 194 | LOR (%) | 100.0 | S/MH (C90/270) | 1.12 |
| RATED VOLTAGE (V) | 220 | TOTAL FLUX (lm) | 26868 | η UP, DN (C0-180) | 0.0,46.3 |
| NOMINAL FLUX (lm) | 26868.4 | CIE CLASS | DIRECT | η UP, DN (C180-360) | 0.0,53.7 |
| LAMPS INSIDE | 1 | η up (%) | 0.0 | CIBSE SHR NOM | 1.00 |
| TEST VOLTAGE (V) | 219.9 | η down (%) | 100.0 | CIBSE SHR MAX | 1.15 |



H(β) Range:-90 - 90DEG
H(β) Interval: 1.0DEG
Test Speed: HIGH
Temperature:25.3°C
Operators:杨守真
Test Date:2025-10-13

V(B) Range:-75 - 75DEG
V(B) Interval: 2.0DEG
Test System:EVERFINE GO-2000A_V1 SYSTEM V2.0.279
Humidity:65.0%
Test Distance:9.078m [K=1.0000]
Remarks:

ZONAL FLUX DIAGRAM

ZONAL FLUX DIAGRAM:

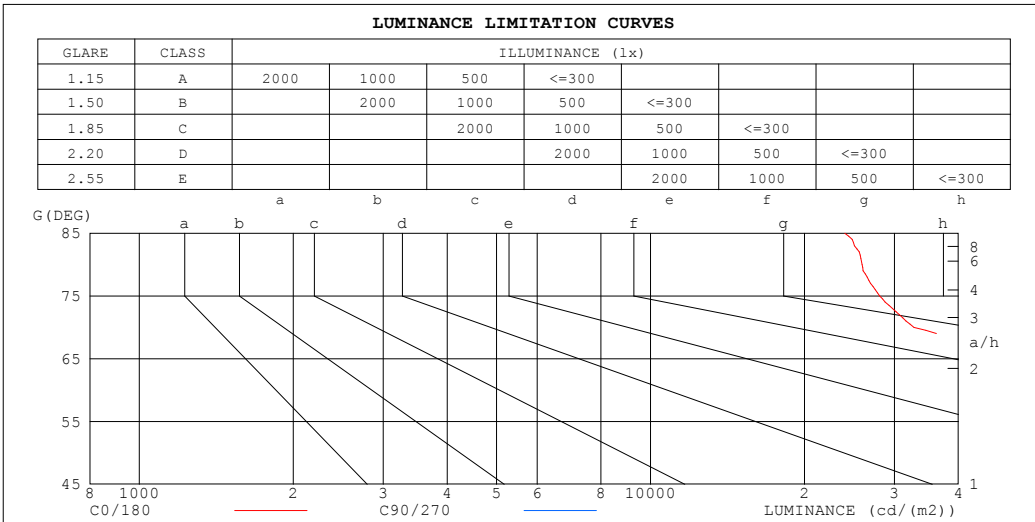
| γ | C0 | C45 | C90 | C135 | C180 | C225 | C270 | C315 | γ | Φ zone | Φ total | %lum,lamp |
|----------|--------------------------|--------|-------|--------|--------|--------|-------|--------|----------|-------------|--------------|-----------|
| 10 | 1625 | 1588 | 1583 | 1595 | 1633 | 1662 | 1678 | 1658 | 0- 10 | 1579 | 1579 | 5.88,5.88 |
| 20 | 1428 | 1353 | 1329 | 1379 | 1462 | 1521 | 1509 | 1504 | 10- 20 | 4348 | 5927 | 22.1,22.1 |
| 30 | 1108 | 1022 | 1024 | 1049 | 1149 | 1204 | 1250 | 1173 | 20- 30 | 5890 | 11818 | 44,44 |
| 40 | 763.9 | 710.0 | 699.7 | 738.2 | 813.4 | 874.1 | 892.8 | 833.8 | 30- 40 | 5951 | 17769 | 66.1,66.1 |
| 50 | 420.4 | 373.1 | 448.5 | 390.5 | 454.1 | 516.9 | 595.8 | 486.9 | 40- 50 | 4753 | 22521 | 83.8,83.8 |
| 60 | 102.1 | 150.3 | 270.2 | 160.1 | 122.5 | 258.1 | 358.8 | 240.1 | 50- 60 | 2910 | 25432 | 94.7,94.7 |
| 70 | 3.363 | 47.20 | 91.82 | 53.04 | 6.128 | 101.3 | 121.7 | 93.00 | 60- 70 | 1209 | 26641 | 99.2,99.2 |
| 80 | 1.351 | 0.0041 | 0 | 0.0053 | 2.523 | 0.0091 | 0 | 0.0075 | 70- 80 | 224.1 | 26865 | 100,100 |
| 90 | 0.0433 | 0 | 0 | 0 | 0.1506 | 0 | 0 | 0 | 80- 90 | 3.550 | 26868 | 100,100 |
| 100 | | | | | | | | | 90-100 | | | |
| 110 | | | | | | | | | 100-110 | | | |
| 120 | | | | | | | | | 110-120 | | | |
| 130 | | | | | | | | | 120-130 | | | |
| 140 | | | | | | | | | 130-140 | | | |
| 150 | | | | | | | | | 140-150 | | | |
| 160 | | | | | | | | | 150-160 | | | |
| 170 | | | | | | | | | 160-170 | | | |
| 180 | | | | | | | | | 170-180 | | | |
| DEG | LUMINOUS INTENSITY:X10cd | | | | | | | | | UNIT:lm | | |

H(β) Range:-90 - 90DEG
H(β) Interval: 1.0DEG
Test Speed: HIGH
Temperature:25.3°C
Operators:杨守真
Test Date:2025-10-13

V(B) Range:-75 - 75DEG
V(B) Interval: 2.0DEG
Test System:EVERFINE GO-2000A_V1 SYSTEM V2.0.279
Humidity:65.0%
Test Distance:9.078m [K=1.0000]
Remarks:

LUMINANCE LIMITATION CURVES

| | | |
|---|------------------------|------------------|
| Test:U:219.70V I:0.8850A P:188.90W PF:0.9710 Freq:50.00Hz Lamp Flux:26868.4x1 lm | | |
| NAME: Uranus High Light | TYPE: GK-TWX-0200-N01S | Shielding Angle: |
| SPEC.: GK-TWX-0200-N01S | | |
| MFR.: | | |



| LUMINANCE cd/(m2) | | |
|-------------------|---------|---------|
| G (DEG) | C0/180 | C90/270 |
| 85 | 23976 | 0 |
| 80 | 25939 | 0 |
| 75 | 28072 | 131917 |
| 70 | 32780 | 894864 |
| 65 | 243205 | 1427486 |
| 60 | 680955 | 1801004 |
| 55 | 1503475 | 2088165 |
| 50 | 2180205 | 2325717 |
| 45 | 2814299 | 2568854 |

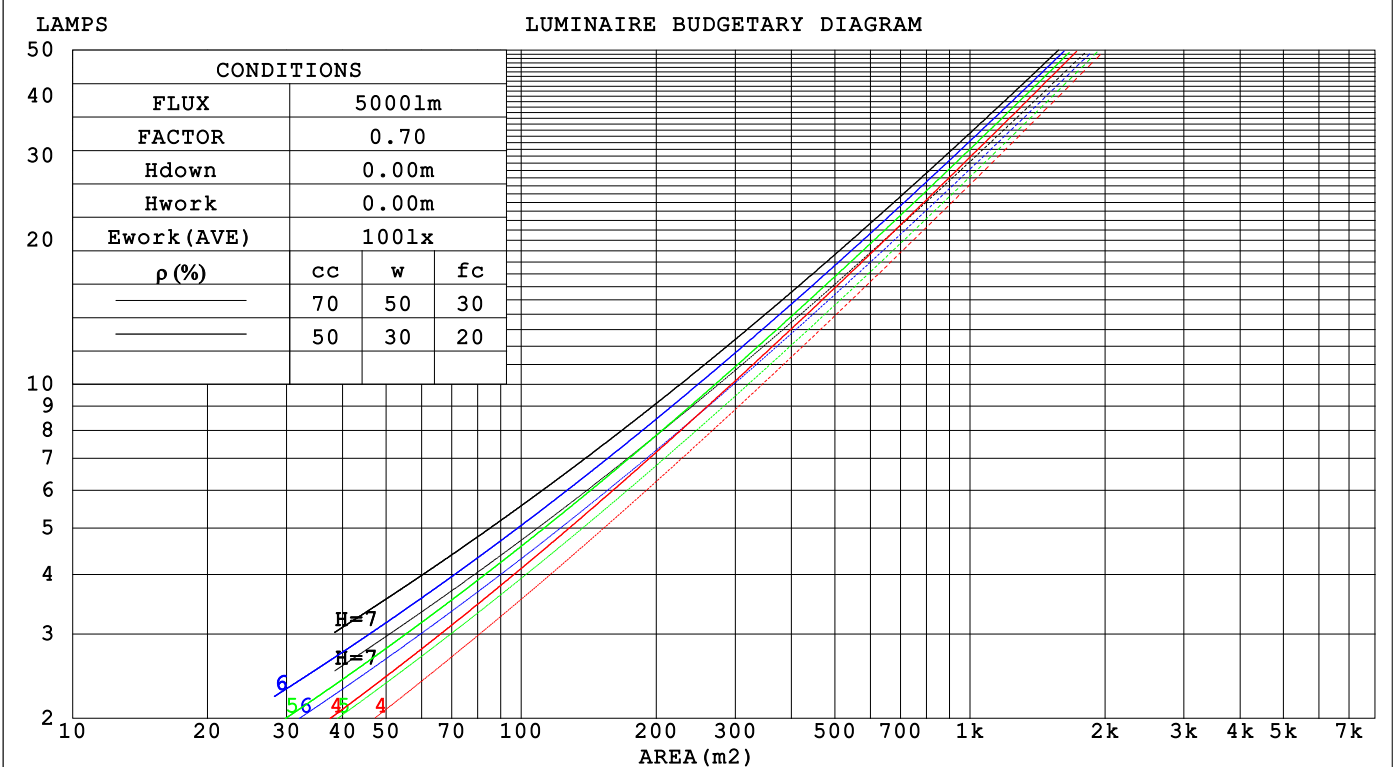
H(β) Range:-90 - 90DEG
H(β) Interval: 1.0DEG
Test Speed: HIGH
Temperature:25.3°C
Operators:杨守真
Test Date:2025-10-13

V(B) Range:-75 - 75DEG
V(B) Interval: 2.0DEG
Test System:EVERFINE GO-2000A_V1 SYSTEM V2.0.279
Humidity:65.0%
Test Distance:9.078m [K=1.0000]
Remarks:

CU AND LUMINAIRE BUDGETARY ESTIMATE DIAGRAM

| | | |
|---|------------------------|------------------|
| Test:U:219.70V I:0.8850A P:188.90W PF:0.9710 Freq:50.00Hz | | |
| Lamp Flux:26868.4x1 lm | | |
| NAME: Uranus High Light | TYPE: GK-TWX-0200-N01S | Shielding Angle: |
| SPEC.: GK-TWX-0200-N01S | | |
| MFR.: | | |

| pcc | 80% | | | 70% | | | 50% | | | 30% | | | 10% | | | 0 |
|-----------------|--|------|------|------|------|------|------|------|------|------|------|------|------|------|------|------|
| | 50% | 30% | 10% | 50% | 30% | 10% | 50% | 30% | 10% | 50% | 30% | 10% | 50% | 30% | 10% | 0 |
| p _w | 50% | 30% | 10% | 50% | 30% | 10% | 50% | 30% | 10% | 50% | 30% | 10% | 50% | 30% | 10% | 0 |
| p _{fc} | 20% | | | 20% | | | 20% | | | 20% | | | 20% | | | 0 |
| RCR | RCR:Room Cavity Ratio Coefficients of Utilization(CU) | | | | | | | | | | | | | | | |
| 0.0 | 1.19 | 1.19 | 1.19 | 1.16 | 1.16 | 1.16 | 1.11 | 1.11 | 1.11 | 1.06 | 1.06 | 1.06 | 1.02 | 1.02 | 1.02 | 1.00 |
| 1.0 | 1.08 | 1.05 | 1.02 | 1.06 | 1.03 | 1.01 | 1.02 | .90 | .98 | .98 | .96 | .95 | .95 | .93 | .92 | .90 |
| 2.0 | .98 | .93 | .88 | .96 | .91 | .87 | .93 | .89 | .85 | .90 | .86 | .83 | .87 | .84 | .82 | .80 |
| 3.0 | .89 | .82 | .77 | .87 | .81 | .76 | .84 | .79 | .75 | .82 | .77 | .74 | .79 | .76 | .73 | .71 |
| 4.0 | .80 | .73 | .68 | .79 | .73 | .68 | .77 | .71 | .67 | .75 | .70 | .66 | .73 | .69 | .65 | .63 |
| 5.0 | .73 | .66 | .60 | .72 | .65 | .60 | .70 | .64 | .60 | .69 | .63 | .59 | .67 | .62 | .58 | .57 |
| 6.0 | .67 | .60 | .54 | .66 | .59 | .54 | .65 | .58 | .54 | .63 | .57 | .53 | .62 | .57 | .53 | .51 |
| 7.0 | .62 | .54 | .49 | .61 | .54 | .49 | .60 | .53 | .49 | .58 | .53 | .48 | .57 | .52 | .48 | .46 |
| 8.0 | .57 | .50 | .45 | .56 | .49 | .45 | .55 | .49 | .44 | .54 | .48 | .44 | .53 | .48 | .44 | .42 |
| 9.0 | .53 | .46 | .41 | .52 | .46 | .41 | .51 | .45 | .41 | .50 | .45 | .40 | .49 | .44 | .40 | .39 |
| 10.0 | .49 | .42 | .38 | .49 | .42 | .38 | .48 | .42 | .37 | .47 | .41 | .37 | .46 | .41 | .37 | .36 |



H(β) Range:-90 - 90DEG
H(β) Interval: 1.0DEG
Test Speed: HIGH
Temperature:25.3°C
Operators:杨守真
Test Date:2025-10-13

V(B) Range:-75 - 75DEG
V(B) Interval: 2.0DEG
Test System:EVERFINE GO-2000A_V1 SYSTEM V2.0.279
Humidity:65.0%
Test Distance:9.078m [K=1.0000]
Remarks:

WEC AND CCEC

| | | |
|---|------------------------|------------------|
| Test:U:219.70V I:0.8850A P:188.90W PF:0.9710 Freq:50.00Hz | | |
| Lamp Flux:26868.4x1 lm | | |
| NAME: Uranus High Light | TYPE: GK-TWX-0200-N01S | Shielding Angle: |
| SPEC.: GK-TWX-0200-N01S | | |
| MFR.: | | |

| ρ_{CC} | 80% | | | 70% | | | 50% | | | 30% | | | 10% | | | 0 |
|-------------|-----------------------|------|------|------|------|------|----------------------------------|------|------|------|------|------|------|------|------|---|
| ρ_w | 50% | 30% | 10% | 50% | 30% | 10% | 50% | 30% | 10% | 50% | 30% | 10% | 50% | 30% | 10% | 0 |
| ρ_{fc} | 20% | | | 20% | | | 20% | | | 20% | | | 20% | | | 0 |
| RCR | RCR:Room Cavity Ratio | | | | | | Wall Exitance Coefficients (WEC) | | | | | | | | | |
| 0.0 | | | | | | | | | | | | | | | | |
| 1.0 | .225 | .128 | .040 | .218 | .124 | .039 | .205 | .118 | .038 | .193 | .111 | .036 | .182 | .106 | .034 | |
| 2.0 | .220 | .121 | .037 | .214 | .118 | .036 | .203 | .113 | .035 | .193 | .108 | .034 | .184 | .104 | .033 | |
| 3.0 | .211 | .112 | .034 | .206 | .110 | .033 | .196 | .106 | .032 | .187 | .103 | .031 | .179 | .099 | .031 | |
| 4.0 | .200 | .104 | .031 | .196 | .102 | .030 | .187 | .099 | .030 | .179 | .096 | .029 | .172 | .093 | .028 | |
| 5.0 | .189 | .096 | .028 | .185 | .095 | .028 | .178 | .093 | .027 | .171 | .090 | .027 | .164 | .088 | .026 | |
| 6.0 | .179 | .090 | .026 | .176 | .089 | .026 | .169 | .087 | .025 | .163 | .085 | .025 | .157 | .083 | .025 | |
| 7.0 | .169 | .084 | .024 | .166 | .083 | .024 | .160 | .081 | .023 | .155 | .079 | .023 | .150 | .078 | .023 | |
| 8.0 | .160 | .078 | .022 | .158 | .078 | .022 | .152 | .076 | .022 | .147 | .075 | .022 | .143 | .073 | .021 | |
| 9.0 | .152 | .074 | .021 | .150 | .073 | .020 | .145 | .072 | .020 | .140 | .070 | .020 | .136 | .069 | .020 | |
| 10.0 | .145 | .069 | .019 | .142 | .069 | .019 | .138 | .068 | .019 | .134 | .066 | .019 | .130 | .065 | .019 | |

| ρ_{CC} | 80% | | | 70% | | | 50% | | | 30% | | | 10% | | | 0 |
|-------------|-----------------------|------|------|------|------|------|---|------|------|------|------|------|------|------|------|---|
| ρ_w | 50% | 30% | 10% | 50% | 30% | 10% | 50% | 30% | 10% | 50% | 30% | 10% | 50% | 30% | 10% | 0 |
| ρ_{fc} | 20% | | | 20% | | | 20% | | | 20% | | | 20% | | | 0 |
| RCR | RCR:Room Cavity Ratio | | | | | | Ceiling Cavity Exitance Coefficients (CCEC) | | | | | | | | | |
| 0.0 | .190 | .190 | .190 | .163 | .163 | .163 | .111 | .111 | .111 | .064 | .064 | .064 | .020 | .020 | .020 | |
| 1.0 | .174 | .157 | .141 | .149 | .135 | .121 | .102 | .093 | .084 | .059 | .054 | .049 | .019 | .017 | .016 | |
| 2.0 | .163 | .132 | .107 | .139 | .114 | .092 | .095 | .079 | .064 | .055 | .046 | .038 | .018 | .015 | .012 | |
| 3.0 | .153 | .114 | .083 | .131 | .098 | .072 | .090 | .068 | .050 | .052 | .040 | .030 | .017 | .013 | .010 | |
| 4.0 | .145 | .100 | .066 | .124 | .086 | .057 | .085 | .060 | .040 | .049 | .035 | .024 | .016 | .011 | .008 | |
| 5.0 | .137 | .089 | .053 | .118 | .077 | .046 | .081 | .054 | .033 | .047 | .032 | .019 | .015 | .010 | .006 | |
| 6.0 | .131 | .080 | .044 | .112 | .069 | .038 | .077 | .049 | .027 | .045 | .029 | .016 | .014 | .009 | .005 | |
| 7.0 | .124 | .073 | .037 | .107 | .063 | .032 | .074 | .044 | .023 | .043 | .026 | .014 | .014 | .009 | .005 | |
| 8.0 | .119 | .067 | .032 | .102 | .058 | .028 | .071 | .041 | .020 | .041 | .024 | .012 | .013 | .008 | .004 | |
| 9.0 | .113 | .062 | .028 | .098 | .054 | .024 | .068 | .038 | .017 | .039 | .022 | .010 | .013 | .007 | .003 | |
| 10.0 | .108 | .058 | .024 | .093 | .050 | .021 | .065 | .035 | .015 | .038 | .021 | .009 | .012 | .007 | .003 | |

H(β) Range:-90 - 90DEG
H(β) Interval: 1.0DEG
Test Speed: HIGH
Temperature:25.3°C
Operators:杨守真
Test Date:2025-10-13

V(B) Range:-75 - 75DEG
V(B) Interval: 2.0DEG
Test System:EVERFINE GO-2000A_V1 SYSTEM V2.0.279
Humidity:65.0%
Test Distance:9.078m [K=1.0000]
Remarks:

UGR(Unified Glare Rating) Table

| | | |
|---|------------------------|------------------|
| Test:U:219.70V I:0.8850A P:188.90W PF:0.9710 Freq:50.00Hz | | |
| Lamp Flux:26868.4x1 lm | | |
| NAME: Uranus High Light | TYPE: GK-TWX-0200-N01S | Shielding Angle: |
| SPEC.: GK-TWX-0200-N01S | | |
| MFR.: | | |

| | | | | | | | | | | |
|----------------|-----|-----|-----|-----|-----|-----|-----|-----|-----|-----|
| ceiling/cavity | 0.7 | 0.7 | 0.5 | 0.5 | 0.3 | 0.7 | 0.7 | 0.5 | 0.5 | 0.3 |
| walls | 0.5 | 0.3 | 0.5 | 0.3 | 0.3 | 0.5 | 0.3 | 0.5 | 0.3 | 0.3 |
| working plane | 0.2 | 0.2 | 0.2 | 0.2 | 0.2 | 0.2 | 0.2 | 0.2 | 0.2 | 0.2 |

| Room dimensions | Viewed crosswise | | | | | Viewed endwise | | | | |
|-----------------|------------------|------|------|------|------|----------------|------|------|------|------|
| x = 2H y = 2H | 25.2 | 26.5 | 25.5 | 26.7 | 26.8 | 26.6 | 27.8 | 26.8 | 28.0 | 28.2 |
| 3H | 25.0 | 26.2 | 25.3 | 26.4 | 26.6 | 27.1 | 28.3 | 27.4 | 28.5 | 28.7 |
| 4H | 24.9 | 26.0 | 25.2 | 26.3 | 26.5 | 27.1 | 28.1 | 27.4 | 28.4 | 28.6 |
| 6H | 24.8 | 25.9 | 25.2 | 26.1 | 26.4 | 27.0 | 28.0 | 27.3 | 28.2 | 28.5 |
| 8H | 24.8 | 25.8 | 25.1 | 26.0 | 26.3 | 26.9 | 27.9 | 27.2 | 28.2 | 28.4 |
| 12H | 24.8 | 25.7 | 25.1 | 26.0 | 26.2 | 26.9 | 27.8 | 27.2 | 28.1 | 28.4 |
| 4H 2H | 25.3 | 26.3 | 25.6 | 26.6 | 26.8 | 26.5 | 27.6 | 26.8 | 27.9 | 28.1 |
| 3H | 25.1 | 26.0 | 25.4 | 26.3 | 26.6 | 27.2 | 28.1 | 27.5 | 28.4 | 28.7 |
| 4H | 25.0 | 25.8 | 25.4 | 26.1 | 26.5 | 27.2 | 28.0 | 27.5 | 28.3 | 28.6 |
| 6H | 24.9 | 25.6 | 25.3 | 26.0 | 26.3 | 27.1 | 27.8 | 27.4 | 28.1 | 28.5 |
| 8H | 24.9 | 25.5 | 25.3 | 25.9 | 26.3 | 27.0 | 27.7 | 27.4 | 28.1 | 28.4 |
| 12H | 24.8 | 25.4 | 25.2 | 25.8 | 26.2 | 27.0 | 27.6 | 27.4 | 28.0 | 28.4 |
| 8H 4H | 24.9 | 25.6 | 25.3 | 26.0 | 26.3 | 27.0 | 27.7 | 27.4 | 28.1 | 28.4 |
| 6H | 24.8 | 25.4 | 25.3 | 25.8 | 26.2 | 26.9 | 27.5 | 27.4 | 27.9 | 28.3 |
| 8H | 24.8 | 25.3 | 25.3 | 25.7 | 26.2 | 26.9 | 27.4 | 27.3 | 27.8 | 28.2 |
| 12H | 24.8 | 25.2 | 25.2 | 25.6 | 26.1 | 26.9 | 27.3 | 27.3 | 27.7 | 28.2 |
| 12H 4H | 24.9 | 25.5 | 25.3 | 25.9 | 26.3 | 27.0 | 27.6 | 27.4 | 28.0 | 28.4 |
| 6H | 24.8 | 25.3 | 25.3 | 25.7 | 26.2 | 26.9 | 27.4 | 27.3 | 27.8 | 28.2 |
| 8H | 24.8 | 25.2 | 25.2 | 25.6 | 26.1 | 26.9 | 27.3 | 27.3 | 27.7 | 28.2 |

| | | |
|---|---------------|---------------|
| Variations with the observer position at spacings(CIE Pub.117): | | |
| S = 1.0H | + 1.6 / - 2.8 | + 0.7 / - 0.9 |
| 1.5H | + 1.0 / - 2.0 | + 0.7 / - 0.8 |
| 2.0H | + 3.5 / - 9.3 | + 1.4 / - 2.3 |

CIE Pub.117, 26868 lm Total Lamp Luminous Flux Correct (8log(F/F0) = 11.4)
 Area: 0.003 m2

H(β) Range:-90 - 90DEG
 H(β) Interval: 1.0DEG
 Test Speed: HIGH
 Temperature:25.3℃
 Operators:杨守真
 Test Date:2025-10-13

V(B) Range:-75 - 75DEG
 V(B) Interval: 2.0DEG
 Test System:EVERFINE GO-2000A_V1 SYSTEM V2.0.279
 Humidity:65.0%
 Test Distance:9.078m [K=1.0000]
 Remarks:

UTILIZATION FACTORS TABLE

| | | |
|---|------------------------|------------------|
| Test:U:219.70V I:0.8850A P:188.90W PF:0.9710 Freq:50.00Hz | | |
| Lamp Flux:26868.4x1 lm | | |
| NAME: Uranus High Light | TYPE: GK-TWX-0200-N01S | Shielding Angle: |
| SPEC.: GK-TWX-0200-N01S | | |
| MFR.: | | |

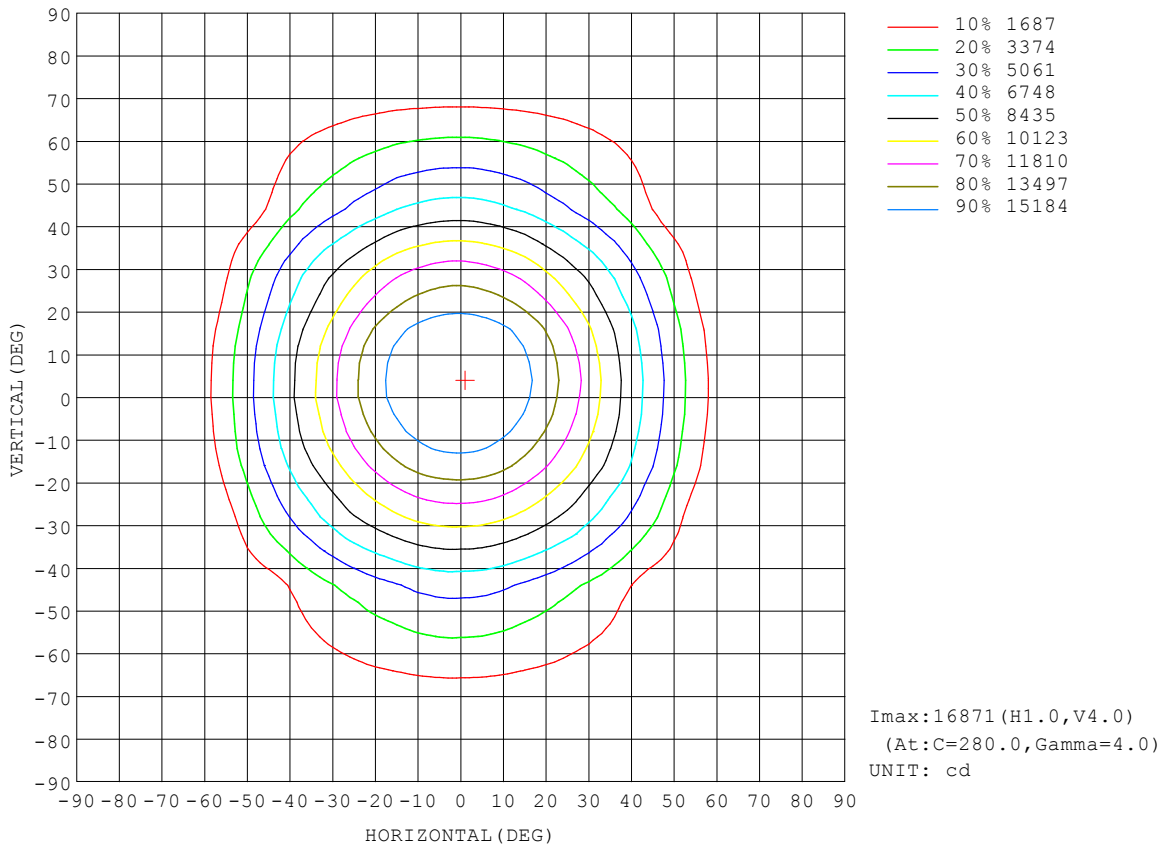
| REFLECTANCE | | | | | | | | | | |
|----------------------------------|---|-----|-----------|-----|-----|-----|---------------|-----|-----|--------|
| Ceiling | 0.8 | 0.8 | 0.8 | 0.7 | 0.7 | 0.7 | 0.5 | 0.5 | 0.5 | 0 |
| Walls | 0.7 | 0.5 | 0.3 | 0.7 | 0.5 | 0.3 | 0.7 | 0.5 | 0.3 | 0 |
| Working plane | 0.2 | 0.2 | 0.2 | 0.2 | 0.2 | 0.2 | 0.2 | 0.2 | 0.2 | 0 |
| ROOM INDEX | UTILIZATION FACTORS (PERCENT) k(RI) x RCR = 5 | | | | | | | | | |
| k = 0.60 | 70 | 60 | 55 | 69 | 60 | 55 | 68 | 60 | 55 | 49 |
| 0.80 | 80 | 71 | 65 | 79 | 70 | 65 | 77 | 70 | 64 | 59 |
| 1.00 | 87 | 79 | 74 | 86 | 78 | 73 | 84 | 79 | 73 | 67 |
| 1.25 | 94 | 86 | 81 | 92 | 85 | 80 | 90 | 84 | 79 | 74 |
| 1.50 | 98 | 91 | 85 | 96 | 90 | 85 | 94 | 88 | 84 | 78 |
| 2.00 | 103 | 97 | 92 | 101 | 96 | 91 | 98 | 94 | 90 | 84 |
| 2.50 | 105 | 100 | 96 | 104 | 99 | 95 | 100 | 96 | 93 | 86 |
| 3.00 | 108 | 103 | 99 | 106 | 101 | 98 | 102 | 99 | 96 | 89 |
| 4.00 | 111 | 107 | 103 | 108 | 105 | 102 | 105 | 102 | 99 | 91 |
| 5.00 | 112 | 109 | 106 | 110 | 107 | 104 | 106 | 103 | 101 | 93 |
| ROOM INDEX | UF(total) | | | | | | | | | Direct |
| According to DIN EN 13032-2 2004 | | | Suspended | | | | SHRNOM = 1.25 | | | |

H(β) Range:-90 - 90DEG
H(β) Interval: 1.0DEG
Test Speed: HIGH
Temperature:25.3℃
Operators:杨守真
Test Date:2025-10-13

V(B) Range:-75 - 75DEG
V(B) Interval: 2.0DEG
Test System:EVERFINE GO-2000A_V1 SYSTEM V2.0.279
Humidity:65.0%
Test Distance:9.078m [K=1.0000]
Remarks:

ISOCANDELA DIAGRAM

| | | |
|---|------------------------|------------------|
| Test:U:219.70V I:0.8850A P:188.90W PF:0.9710 Freq:50.00Hz | | |
| Lamp Flux:26868.4x1 lm | | |
| NAME: Uranus High Light | TYPE: GK-TWX-0200-N01S | Shielding Angle: |
| SPEC.: GK-TWX-0200-N01S | | |
| MFR.: | | |



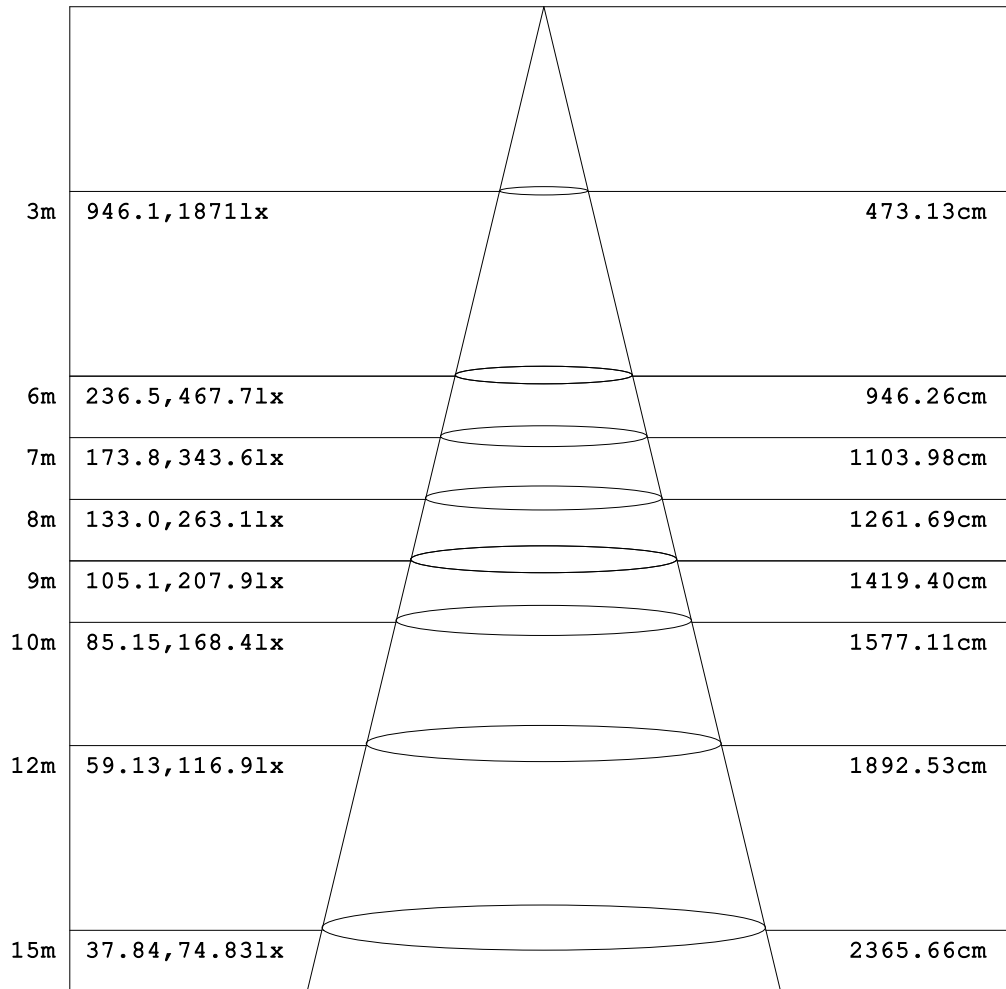
H(β) Range:-90 - 90DEG
 H(β) Interval: 1.0DEG
 Test Speed: HIGH
 Temperature:25.3℃
 Operators:杨守真
 Test Date:2025-10-13

V(B) Range:-75 - 75DEG
 V(B) Interval: 2.0DEG
 Test System:EVERFINE GO-2000A_V1 SYSTEM V2.0.279
 Humidity:65.0%
 Test Distance:9.078m [K=1.0000]
 Remarks:

AAI Figure

| | | |
|---|------------------------|------------------|
| Test:U:219.70V I:0.8850A P:188.90W PF:0.9710 Freq:50.00Hz Lamp Flux:26868.4x1 lm | | |
| NAME: Uranus High Light | TYPE: GK-TWX-0200-N01S | Shielding Angle: |
| SPEC.: GK-TWX-0200-N01S | | |
| MFR.: | | |

Flux out:16925 lm



Angle:76.52deg

Height

Eavg, Emax

Diameter

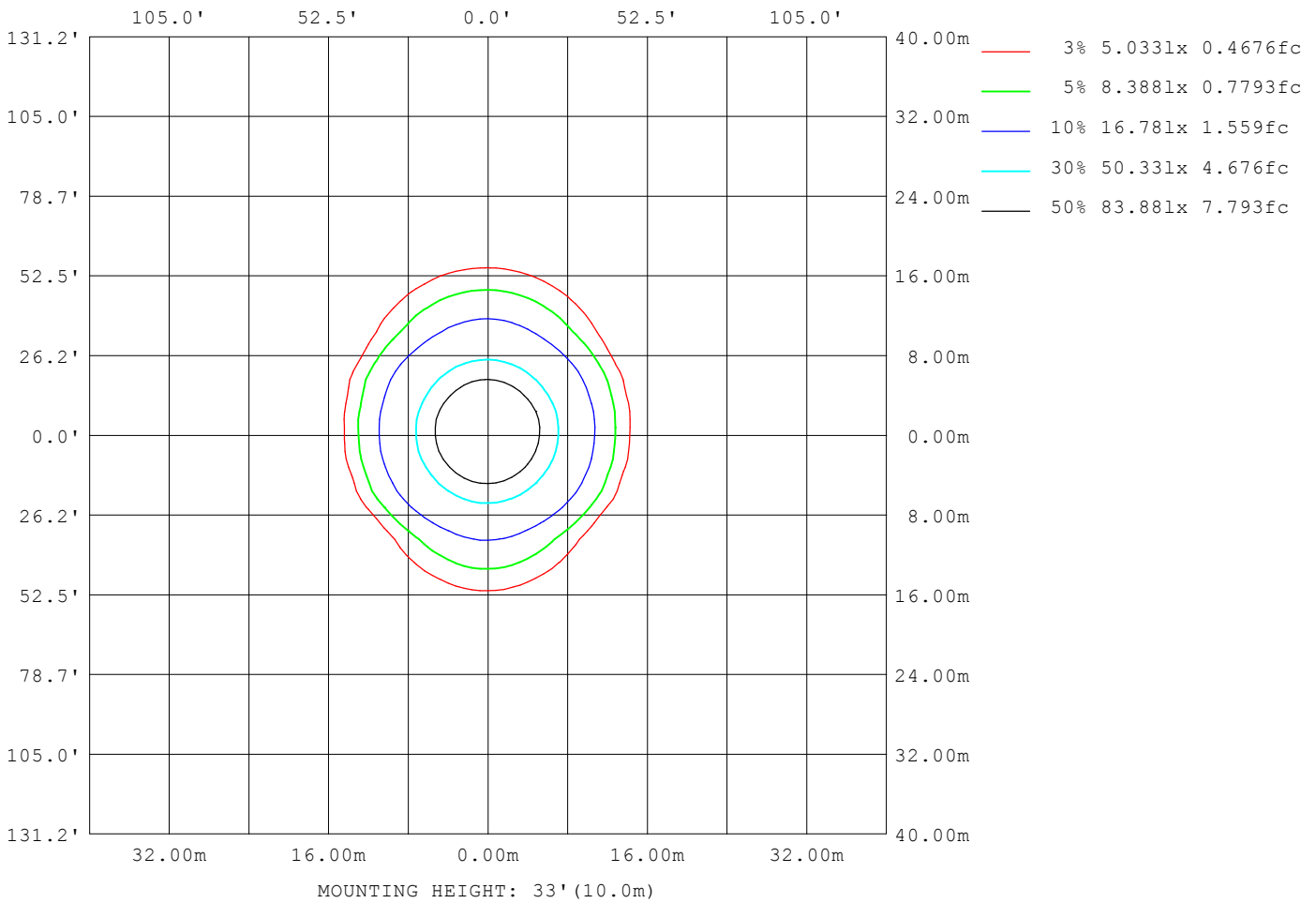
Note:The Curves indicate the illuminated area and the average illumination when the luminaire is at different distance.

H(β) Range:-90 - 90DEG
H(β) Interval: 1.0DEG
Test Speed: HIGH
Temperature:25.3°C
Operators:杨守真
Test Date:2025-10-13

V(B) Range:-75 - 75DEG
V(B) Interval: 2.0DEG
Test System:EVERFINE GO-2000A_V1 SYSTEM V2.0.279
Humidity:65.0%
Test Distance:9.078m [K=1.0000]
Remarks:

ISOLUX DIAGRAM

| | | |
|---|------------------------|------------------|
| Test:U:219.70V I:0.8850A P:188.90W PF:0.9710 Freq:50.00Hz Lamp Flux:26868.4x1 lm | | |
| NAME: Uranus High Light | TYPE: GK-TWX-0200-N01S | Shielding Angle: |
| SPEC.: GK-TWX-0200-N01S | | |
| MFR.: | | |



H(β) Range:-90 - 90DEG
H(β) Interval: 1.0DEG
Test Speed: HIGH
Temperature:25.3°C
Operators:杨守真
Test Date:2025-10-13

V(B) Range:-75 - 75DEG
V(B) Interval: 2.0DEG
Test System:EVERFINE GO-2000A_V1 SYSTEM V2.0.279
Humidity:65.0%
Test Distance:9.078m [K=1.0000]
Remarks:

LED Avg.L Report

| | | |
|---|------------------------|------------------|
| Test:U:219.70V I:0.8850A P:188.90W PF:0.9710 Freq:50.00Hz | | |
| Lamp Flux:26868.4x1 lm | | |
| NAME: Uranus High Light | TYPE: GK-TWX-0200-N01S | Shielding Angle: |
| SPEC.: GK-TWX-0200-N01S | | |
| MFR.: | | |

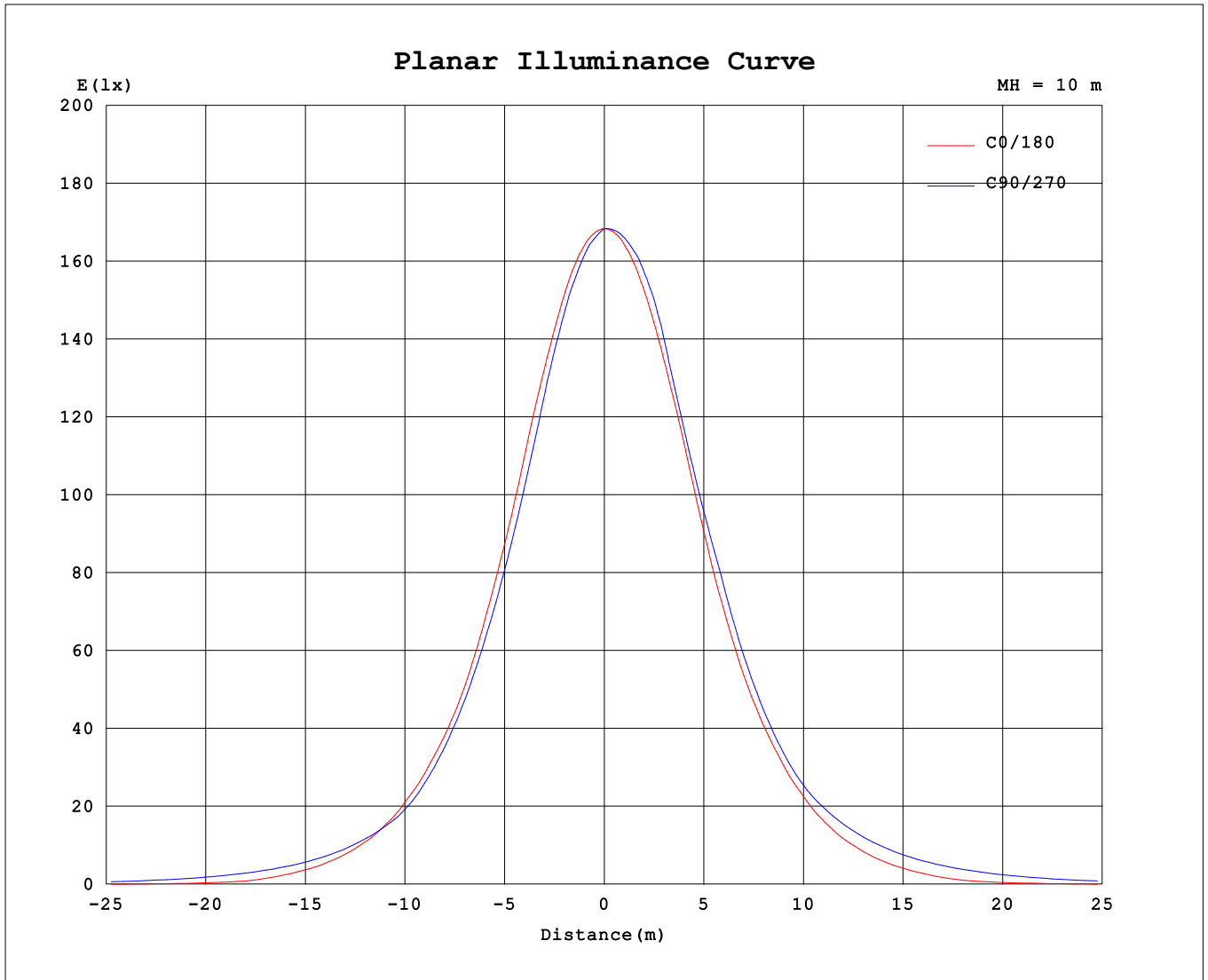
| AvgL | cd/m2 |
|------------------|---------|
| L_0~180 (65) av | 276068 |
| L_0~180 (75) av | 39941 |
| L_0~180 (85) av | 35228 |
| L_90~270 (65) av | 1661227 |
| L_90~270 (75) av | 152690 |
| L_90~270 (85) av | 0 |
| L_45 (65) av | 1038174 |
| L_45 (75) av | 391614 |
| L_45 (85) av | 0 |

Standard: GB/T 29293-2012

H(β) Range:-90 - 90DEG
H(β) Interval: 1.0DEG
Test Speed: HIGH
Temperature:25.3°C
Operators:杨守真
Test Date:2025-10-13

V(B) Range:-75 - 75DEG
V(B) Interval: 2.0DEG
Test System:EVERFINE GO-2000A_V1 SYSTEM V2.0.279
Humidity:65.0%
Test Distance:9.078m [K=1.0000]
Remarks:

Planar Illuminance Curve



H(β) Range:-90 - 90DEG
 H(β) Interval: 1.0DEG
 Test Speed: HIGH
 Temperature:25.3°C
 Operators:杨守真
 Test Date:2025-10-13

V(B) Range:-75 - 75DEG
 V(B) Interval: 2.0DEG
 Test System:EVERFINE GO-2000A_V1 SYSTEM V2.0.279
 Humidity:65.0%
 Test Distance:9.078m [K=1.0000]
 Remarks:

