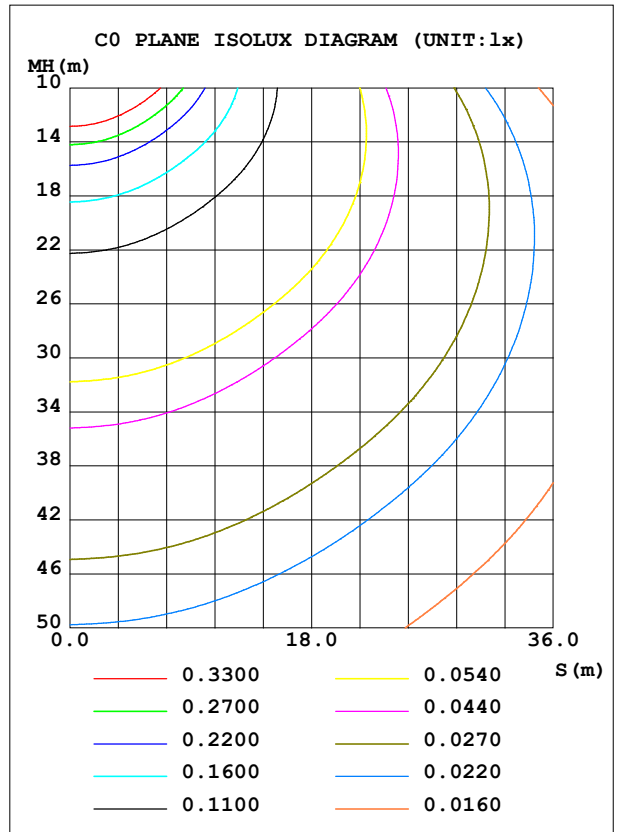
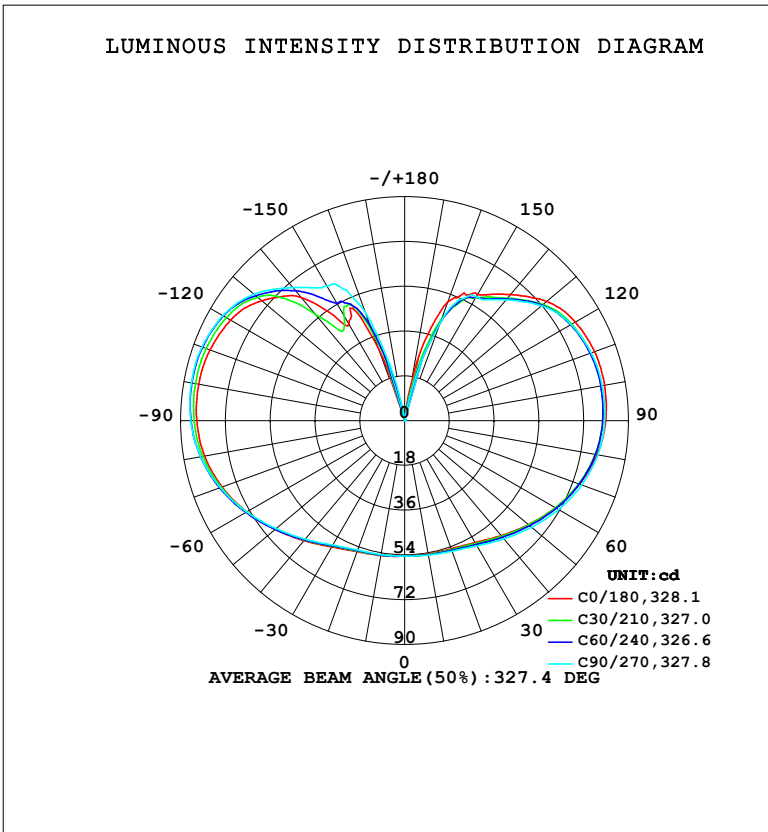


**LUMINAIRE PHOTOMETRIC TEST REPORT**

Test:U:219.20V I:0.0670A P:7.7400W PF:0.5240 Freq:50.00Hz Lamp Flux:897.235x1 lm		
NAME: Bulb lamp	TYPE:	WEIGHT:
SPEC.:	DIM.:	SERIAL No.:
MFR.:	SUR.:	Shielding Angle:

DATA OF LAMP		PHOTOMETRIC DATA			
MODEL	A60-QZG-08F01-60-E27	Imax (cd)	87.18	S/MH (C0/180)	1.74
NOMINAL POWER (W)	8	LOR (%)	100.0	S/MH (C90/270)	1.73
RATED VOLTAGE (V)	220	TOTAL FLUX (lm)	897.23	$\eta$ UP, DN (C0-180)	24.7, 24.4
NOMINAL FLUX (lm)	897.235	CIE CLASS	DIFFUSE	$\eta$ UP, DN (C180-360)	25.9, 25.0
LAMPS INSIDE	1	$\eta$ up (%)	50.6	CIBSE SHR NOM	2.00
TEST VOLTAGE (V)	219.2	$\eta$ down (%)	49.4	CIBSE SHR MAX	2.00



C Range: 0 - 360DEG  
 C Interval: 15.0DEG  
 Test Speed: HIGH  
 Temperature: 25.3°C  
 Operators: 杨守真  
 Test Date: 2025-04-25

$\gamma$  Range: 0 - 180DEG  
 $\gamma$  Interval: 1.0DEG  
 Test System: EVERFINE GO-2000A\_V1 SYSTEM V2.0.279  
 Humidity: 65.0%  
 Test Distance: 9.078m [K=1.0000]  
 Remarks:

ZONAL FLUX DIAGRAM

ZONAL FLUX DIAGRAM:

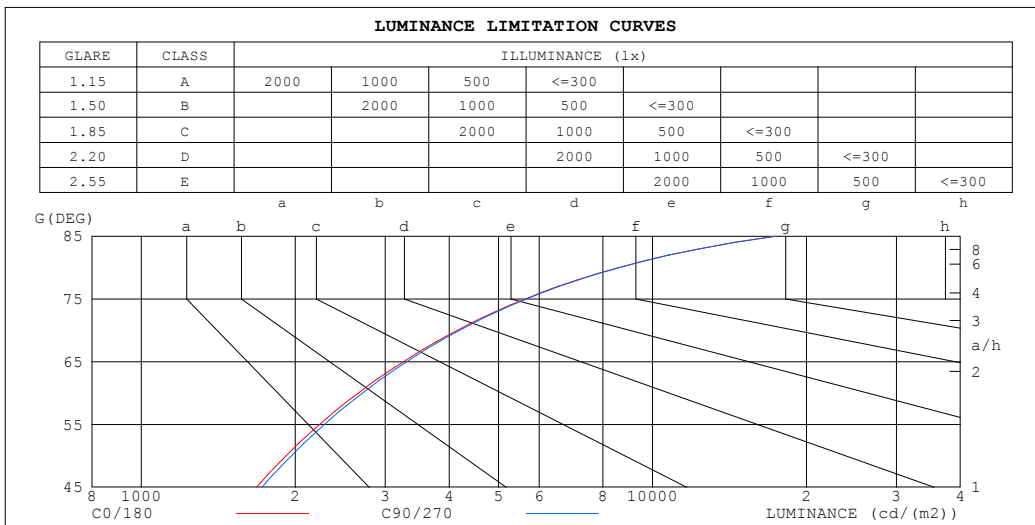
$\gamma$	C0	C45	C90	C135	C180	C225	C270	C315	$\gamma$	$\Phi$ zone	$\Phi$ total	%lum,lamp
10	54.43	54.71	54.89	55.08	55.07	54.88	54.71	54.49	0- 10	5.215	5.215	0.58,0.58
20	54.83	55.33	55.82	56.09	56.07	55.73	55.40	55.01	10- 20	15.63	20.84	2.32,2.32
30	56.59	57.21	58.13	58.62	58.65	58.30	57.83	57.12	20- 30	26.19	47.03	5.24,5.24
40	60.35	60.79	62.06	62.74	62.99	62.79	62.21	61.21	30- 40	37.59	84.62	9.43,9.43
50	65.02	65.21	66.69	67.57	68.01	68.12	67.54	66.23	40- 50	49.86	134.5	15,15
60	70.06	69.97	71.49	72.61	73.35	73.78	73.38	71.70	50- 60	62.32	196.8	21.9,21.9
70	74.81	74.35	75.73	76.98	78.11	78.93	78.87	76.99	60- 70	74.00	270.8	30.2,30.2
80	78.55	77.71	78.90	80.21	81.67	82.95	83.30	81.34	70- 80	83.40	354.2	39.5,39.5
90	80.80	79.51	80.33	81.73	83.53	85.23	85.96	83.99	80- 90	89.22	443.4	49.4,49.4
100	81.64	80.00	80.60	81.99	84.06	86.14	87.07	85.08	90-100	90.64	534.1	59.5,59.5
110	81.26	79.36	79.74	81.11	83.20	85.69	86.67	84.89	100-110	88.02	622.1	69.3,69.3
120	79.27	77.26	77.27	78.65	80.81	83.45	84.39	82.64	110-120	81.14	703.2	78.4,78.4
130	74.59	72.52	71.88	73.33	75.00	75.83	79.07	77.65	120-130	70.25	773.5	86.2,86.2
140	66.17	64.20	63.42	64.67	64.61	53.83	69.83	68.59	130-140	54.65	828.1	92.3,92.3
150	58.62	57.29	57.57	58.51	44.96	52.76	62.41	61.40	140-150	37.93	866.1	96.5,96.5
160	50.72	43.51	41.35	33.34	30.75	37.07	46.18	51.44	150-160	24.30	890.4	99.2,99.2
170	14.91	4.662	1.735	0.3439	0.5994	1.859	3.212	8.800	160-170	6.731	897.1	100,100
180	0.2659	0.2551	0.2164	0.2331	0.2548	0.2440	0.2220	0.2387	170-180	0.1366	897.2	100,100
DEG	LUMINOUS INTENSITY:cd									UNIT:lm		

C Range: 0 - 360DEG  
 C Interval: 15.0DEG  
 Test Speed: HIGH  
 Temperature:25.3°C  
 Operators:杨守真  
 Test Date:2025-04-25

$\gamma$  Range: 0 - 180DEG  
 $\gamma$  Interval: 1.0DEG  
 Test System:EVERFINE GO-2000A\_V1 SYSTEM V2.0.279  
 Humidity:65.0%  
 Test Distance:9.078m [K=1.0000]  
 Remarks:

**LUMINANCE LIMITATION CURVES**

Test:U:219.20V I:0.0670A P:7.7400W PF:0.5240 Freq:50.00Hz Lamp Flux:897.235x1 lm		
NAME: Bulb lamp	TYPE:	WEIGHT:
SPEC.:	DIM.:	SERIAL No.:
MFR.:	SUR.:	Shielding Angle:



LUMINANCE cd/(m2)		
G (DEG)	C0/180	C90/270
85	17395	17345
80	8581	8604
75	5629	5666
70	4149	4193
65	3256	3304
60	2658	2708
55	2232	2281
50	1919	1965
45	1680	1722

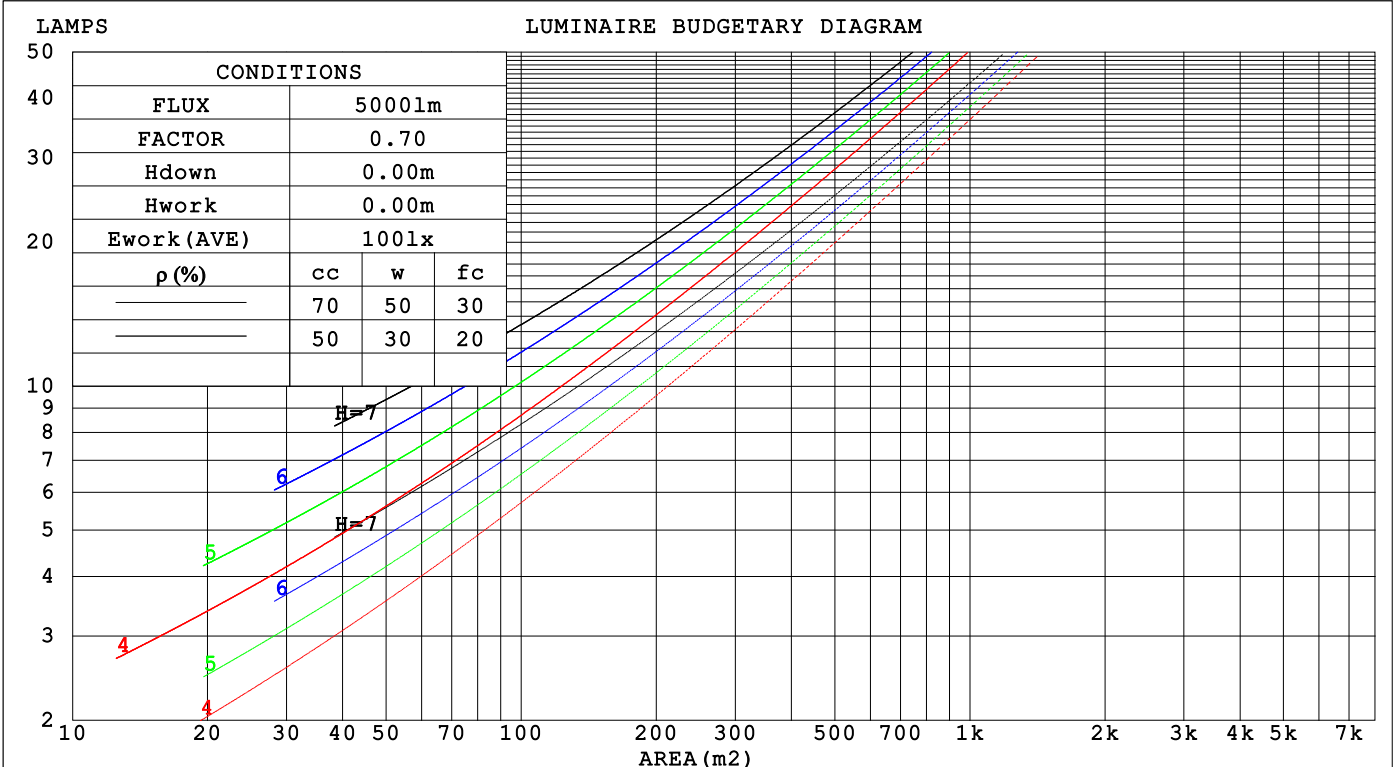
C Range: 0 - 360DEG  
 C Interval: 15.0DEG  
 Test Speed: HIGH  
 Temperature: 25.3°C  
 Operators: 杨守真  
 Test Date: 2025-04-25

γ Range: 0 - 180DEG  
 γ Interval: 1.0DEG  
 Test System: EVERFINE GO-2000A\_V1 SYSTEM V2.0.279  
 Humidity: 65.0%  
 Test Distance: 9.078m [K=1.0000]  
 Remarks:

CU AND LUMINAIRE BUDGETARY ESTIMATE DIAGRAM

Test:U:219.20V I:0.0670A P:7.7400W PF:0.5240 Freq:50.00Hz Lamp Flux:897.235x1 lm		
NAME: Bulb lamp	TYPE:	WEIGHT:
SPEC.:	DIM.:	SERIAL No.:
MFR.:	SUR.:	Shielding Angle:

ρcc	80%			70%			50%			30%			10%			0
	ρw	30%	10%	50%	30%	10%	50%	30%	10%	50%	30%	10%	50%	30%	10%	0
ρfc	20%			20%			20%			20%			20%			0
RCR	RCR:Room Cavity Ratio															
	Coefficients of Utilization(CU)															
0.0	1.07	1.07	1.07	.99	.99	.99	.83	.83	.83	.69	.69	.69	.56	.56	.56	.49
1.0	.86	.81	.75	.79	.74	.69	.65	.62	.58	.53	.50	.47	.41	.39	.37	.31
2.0	.73	.65	.58	.67	.59	.53	.55	.49	.44	.44	.40	.36	.34	.31	.28	.23
3.0	.63	.53	.46	.57	.49	.42	.47	.41	.35	.37	.32	.28	.29	.25	.22	.17
4.0	.54	.45	.38	.50	.41	.35	.41	.34	.29	.32	.27	.23	.25	.21	.18	.14
5.0	.48	.39	.32	.44	.35	.29	.36	.29	.24	.29	.23	.19	.22	.18	.15	.11
6.0	.43	.33	.27	.39	.31	.25	.32	.25	.21	.26	.20	.16	.20	.16	.12	.09
7.0	.38	.29	.23	.35	.27	.21	.29	.22	.18	.23	.18	.14	.18	.14	.11	.08
8.0	.34	.26	.20	.32	.24	.18	.26	.20	.15	.21	.16	.12	.16	.12	.09	.07
9.0	.31	.23	.18	.29	.21	.16	.24	.18	.14	.19	.14	.11	.15	.11	.08	.06
10.0	.29	.21	.16	.26	.19	.14	.22	.16	.12	.18	.13	.10	.14	.10	.07	.05



C Range: 0 - 360DEG  
 C Interval: 15.0DEG  
 Test Speed: HIGH  
 Temperature: 25.3°C  
 Operators: 杨守真  
 Test Date: 2025-04-25

γ Range: 0 - 180DEG  
 γ Interval: 1.0DEG  
 Test System: EVERFINE GO-2000A\_V1 SYSTEM V2.0.279  
 Humidity: 65.0%  
 Test Distance: 9.078m [K=1.0000]  
 Remarks:

WEC AND CCEC

Test:U:219.20V I:0.0670A P:7.7400W PF:0.5240 Freq:50.00Hz								
Lamp Flux:897.235x1 lm								
NAME: Bulb lamp			TYPE:			WEIGHT:		
SPEC.:			DIM.:			SERIAL No.:		
MFR.:			SUR.:			Shielding Angle:		

ρ <sub>CC</sub>	80%			70%			50%			30%			10%			0
ρ <sub>w</sub>	50%	30%	10%	50%	30%	10%	50%	30%	10%	50%	30%	10%	50%	30%	10%	0
ρ <sub>fc</sub>	20%			20%			20%			20%			20%			0
RCR	RCR:Room Cavity Ratio						Wall Exitance Coefficients (WEC)									
0.0																
1.0	.414	.235	.075	.391	.223	.071	.349	.200	.064	.310	.179	.057	.274	.159	.051	
2.0	.344	.188	.058	.323	.178	.055	.284	.158	.049	.249	.140	.044	.216	.122	.038	
3.0	.299	.159	.048	.280	.150	.045	.245	.133	.040	.212	.116	.036	.182	.101	.031	
4.0	.266	.138	.041	.249	.130	.038	.216	.115	.034	.186	.100	.030	.158	.086	.026	
5.0	.240	.122	.035	.224	.115	.033	.194	.101	.030	.166	.088	.026	.140	.075	.022	
6.0	.218	.109	.031	.204	.103	.030	.176	.090	.026	.150	.078	.023	.126	.066	.020	
7.0	.200	.099	.028	.187	.093	.027	.161	.082	.023	.137	.070	.021	.115	.060	.018	
8.0	.185	.090	.025	.173	.085	.024	.149	.074	.021	.127	.064	.019	.106	.054	.016	
9.0	.172	.083	.023	.160	.078	.022	.138	.068	.019	.118	.059	.017	.098	.050	.014	
10.0	.161	.077	.021	.150	.072	.020	.129	.063	.018	.110	.054	.015	.091	.046	.013	

ρ <sub>CC</sub>	80%			70%			50%			30%			10%			0
ρ <sub>w</sub>	50%	30%	10%	50%	30%	10%	50%	30%	10%	50%	30%	10%	50%	30%	10%	0
ρ <sub>fc</sub>	20%			20%			20%			20%			20%			0
RCR	RCR:Room Cavity Ratio						Ceiling Cavity Exitance Coefficients (CCEC)									
0.0	.576	.576	.576	.492	.492	.492	.336	.336	.336	.193	.193	.193	.062	.062	.062	
1.0	.576	.544	.515	.493	.467	.443	.337	.321	.306	.194	.186	.178	.062	.060	.058	
2.0	.570	.523	.483	.488	.450	.417	.335	.311	.291	.193	.181	.171	.062	.059	.056	
3.0	.563	.508	.463	.483	.438	.402	.332	.304	.282	.192	.178	.166	.062	.058	.054	
4.0	.556	.496	.451	.477	.429	.392	.328	.299	.276	.190	.175	.163	.061	.057	.054	
5.0	.549	.487	.442	.471	.422	.385	.324	.295	.272	.188	.173	.161	.061	.056	.053	
6.0	.541	.480	.436	.465	.416	.380	.321	.291	.269	.186	.171	.160	.060	.056	.053	
7.0	.535	.474	.432	.460	.411	.376	.318	.288	.266	.185	.170	.159	.060	.056	.052	
8.0	.528	.469	.428	.455	.407	.373	.315	.285	.265	.183	.168	.158	.059	.055	.052	
9.0	.522	.464	.425	.450	.403	.371	.312	.283	.263	.181	.167	.157	.059	.055	.052	
10.0	.516	.460	.423	.445	.400	.369	.309	.281	.262	.180	.166	.157	.058	.055	.052	

C Range: 0 - 360DEG  
 C Interval: 15.0DEG  
 Test Speed: HIGH  
 Temperature:25.3°C  
 Operators:杨守真  
 Test Date:2025-04-25

γ Range: 0 - 180DEG  
 γ Interval: 1.0DEG  
 Test System:EVERFINE GO-2000A\_V1 SYSTEM V2.0.279  
 Humidity:65.0%  
 Test Distance:9.078m [K=1.0000]  
 Remarks:

**UGR(Unified Glare Rating) Table**

Test:U:219.20V I:0.0670A P:7.7400W PF:0.5240 Freq:50.00Hz										
Lamp Flux:897.235x1 lm										
NAME: Bulb lamp			TYPE:				WEIGHT:			
SPEC.:			DIM.:				SERIAL No.:			
MFR.:			SUR.:				Shielding Angle:			
ceiling/cavity	0.7	0.7	0.5	0.5	0.3	0.7	0.7	0.5	0.5	0.3
walls	0.5	0.3	0.5	0.3	0.3	0.5	0.3	0.5	0.3	0.3
working plane	0.2	0.2	0.2	0.2	0.2	0.2	0.2	0.2	0.2	0.2
Room dimensions	Viewed crosswise					Viewed endwise				
x = 2H y = 2H	12.7	13.8	13.6	14.7	15.8	12.8	13.8	13.6	14.7	15.9
3H	16.2	17.1	17.1	18.1	19.3	16.2	17.2	17.1	18.1	19.3
4H	18.1	19.1	19.0	20.0	21.2	18.2	19.1	19.1	20.1	21.3
6H	20.3	21.2	21.2	22.1	23.4	20.4	21.2	21.3	22.2	23.4
8H	21.5	22.4	22.5	23.3	24.6	21.6	22.4	22.5	23.4	24.6
12H	22.9	23.7	23.9	24.7	25.9	22.9	23.7	23.9	24.7	26.0
4H 2H	13.8	14.7	14.7	15.6	16.8	13.8	14.7	14.7	15.7	16.9
3H	17.3	18.1	18.3	19.1	20.3	17.4	18.2	18.3	19.1	20.4
4H	19.4	20.1	20.4	21.1	22.4	19.4	20.2	20.4	21.2	22.4
6H	21.7	22.4	22.7	23.4	24.7	21.8	22.4	22.7	23.4	24.7
8H	23.0	23.6	24.0	24.6	25.9	23.0	23.7	24.0	24.7	26.0
12H	24.5	25.1	25.5	26.1	27.4	24.5	25.1	25.5	26.1	27.4
8H 4H	20.2	20.8	21.1	21.8	23.1	20.2	20.8	21.2	21.8	23.1
6H	22.7	23.3	23.7	24.3	25.6	22.7	23.3	23.7	24.3	25.6
8H	24.2	24.7	25.2	25.7	27.0	24.2	24.7	25.2	25.7	27.1
12H	25.9	26.3	26.9	27.3	28.7	25.9	26.3	26.9	27.3	28.7
12H 4H	20.4	20.9	21.4	22.0	23.3	20.4	21.0	21.4	22.0	23.3
6H	23.1	23.5	24.1	24.6	25.9	23.1	23.5	24.1	24.6	25.9
8H	24.6	25.1	25.7	26.1	27.5	24.6	25.1	25.7	26.1	27.5
Variations with the observer position at spacings(CIE Pub.117):										
S = 1.0H	+ 0.1 / - 0.1					+ 0.1 / - 0.1				
1.5H	+ 0.2 / - 0.3					+ 0.2 / - 0.3				
2.0H	+ 0.3 / - 0.4					+ 0.3 / - 0.4				

CIE Pub.117, 897.2 lm Total Lamp Luminous Flux Correct (8log(F/F0) = -0.4)  
 Area: 0.0528 m2

C Range: 0 - 360DEG  
 C Interval: 15.0DEG  
 Test Speed: HIGH  
 Temperature:25.3°C  
 Operators:杨守真  
 Test Date:2025-04-25

γ Range: 0 - 180DEG  
 γ Interval: 1.0DEG  
 Test System:EVERFINE GO-2000A\_V1 SYSTEM V2.0.279  
 Humidity:65.0%  
 Test Distance:9.078m [K=1.0000]  
 Remarks:

**UTILIZATION FACTORS TABLE**

Test:U:219.20V I:0.0670A P:7.7400W PF:0.5240 Freq:50.00Hz Lamp Flux:897.235x1 lm		
NAME: Bulb lamp	TYPE:	WEIGHT:
SPEC.:	DIM.:	SERIAL No.:
MFR.:	SUR.:	Shielding Angle:

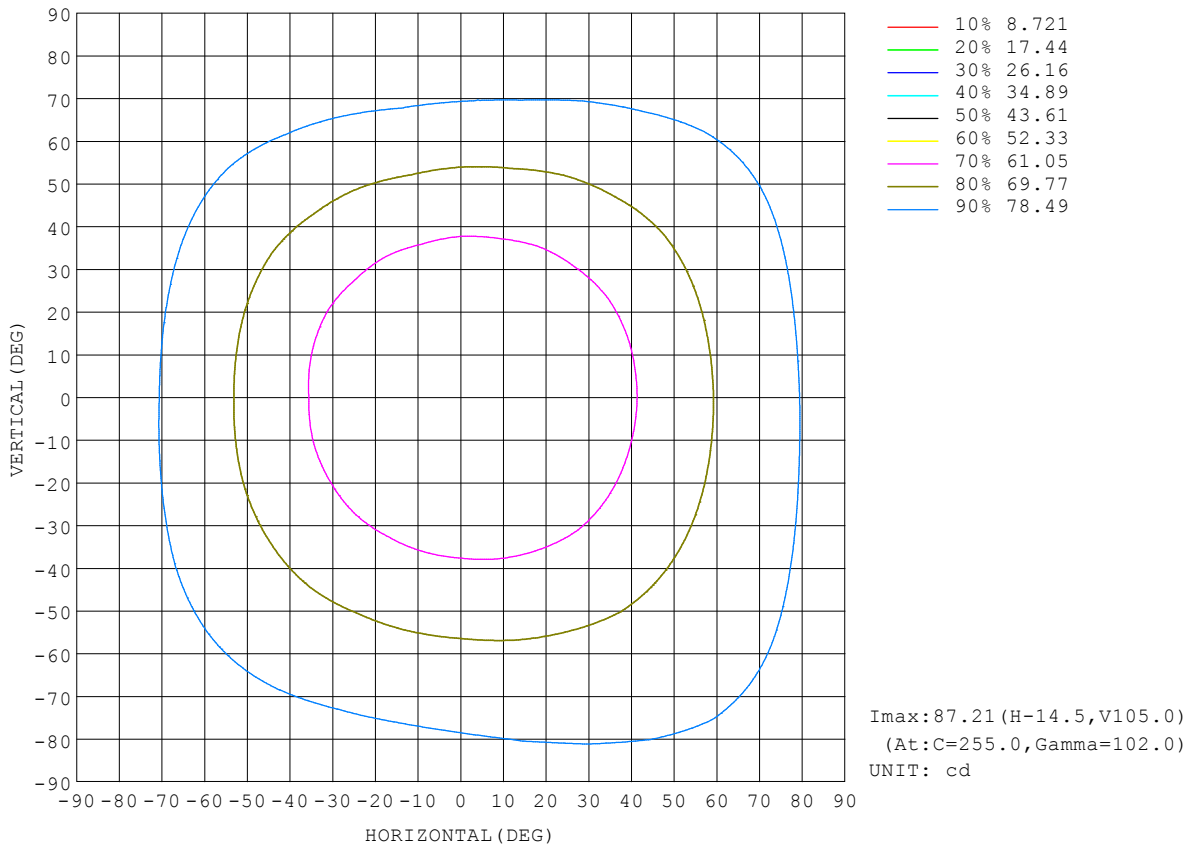
REFLECTANCE										
Ceiling	0.8	0.8	0.8	0.7	0.7	0.7	0.5	0.5	0.5	0
Walls	0.7	0.5	0.3	0.7	0.5	0.3	0.7	0.5	0.3	0
Working plane	0.2	0.2	0.2	0.2	0.2	0.2	0.2	0.2	0.2	0
ROOM INDEX	UTILIZATION FACTORS (PERCENT) $k(RI) \times RCR = 5$									
k = 0.60	36	23	16	34	22	15	30	20	14	7
0.80	44	30	22	41	29	21	36	26	19	9
1.00	51	37	28	48	35	26	41	33	24	12
1.25	58	44	34	54	41	32	46	36	29	15
1.50	63	49	39	59	46	37	50	40	33	17
2.00	71	58	48	66	54	45	56	46	39	21
2.50	76	64	55	70	59	51	59	51	44	24
3.00	80	69	60	74	64	56	62	55	48	26
4.00	85	76	68	79	70	63	66	60	54	30
5.00	89	80	73	82	74	68	69	63	58	32
ROOM INDEX	UF(total)									Direct
According to DIN EN 13032-2 2004			Suspended				SHRNOM = 1.25			

C Range: 0 - 360DEG  
 C Interval: 15.0DEG  
 Test Speed: HIGH  
 Temperature:25.3°C  
 Operators:杨守真  
 Test Date:2025-04-25

γ Range: 0 - 180DEG  
 γ Interval: 1.0DEG  
 Test System:EVERFINE GO-2000A\_V1 SYSTEM V2.0.279  
 Humidity:65.0%  
 Test Distance:9.078m [K=1.0000]  
 Remarks:

**ISOCANDELA DIAGRAM**

Test:U:219.20V I:0.0670A P:7.7400W PF:0.5240 Freq:50.00Hz Lamp Flux:897.235x1 lm		
NAME: Bulb lamp	TYPE:	WEIGHT:
SPEC.:	DIM.:	SERIAL No.:
MFR.:	SUR.:	Shielding Angle:

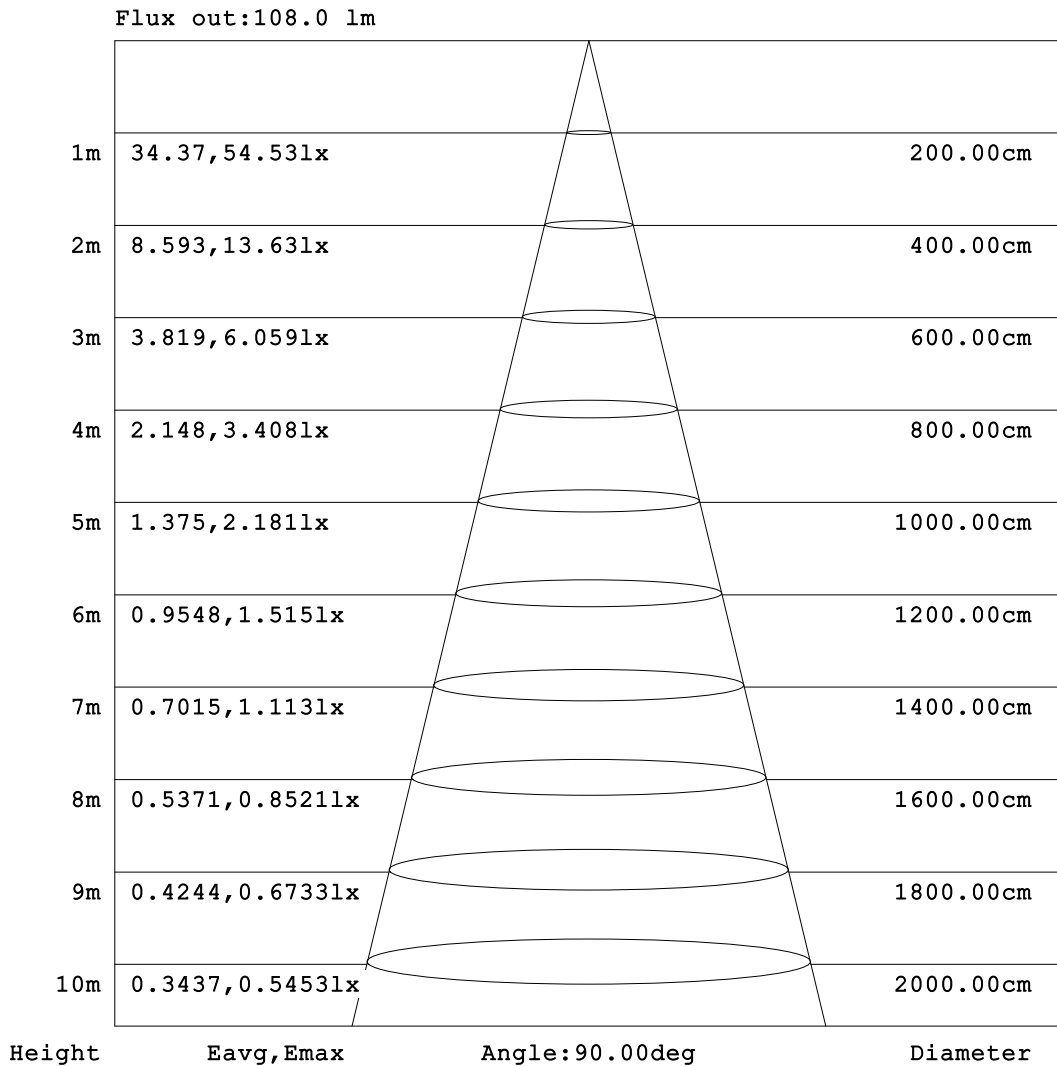


C Range: 0 - 360DEG  
C Interval: 15.0DEG  
Test Speed: HIGH  
Temperature:25.3°C  
Operators:杨守真  
Test Date:2025-04-25

γ Range: 0 - 180DEG  
γ Interval: 1.0DEG  
Test System:EVERFINE GO-2000A\_V1 SYSTEM V2.0.279  
Humidity:65.0%  
Test Distance:9.078m [K=1.0000]  
Remarks:

**AAI Figure**

Test:U:219.20V I:0.0670A P:7.7400W PF:0.5240 Freq:50.00Hz Lamp Flux:897.235x1 lm		
NAME: Bulb lamp	TYPE:	WEIGHT:
SPEC.:	DIM.:	SERIAL No.:
MFR.:	SUR.:	Shielding Angle:



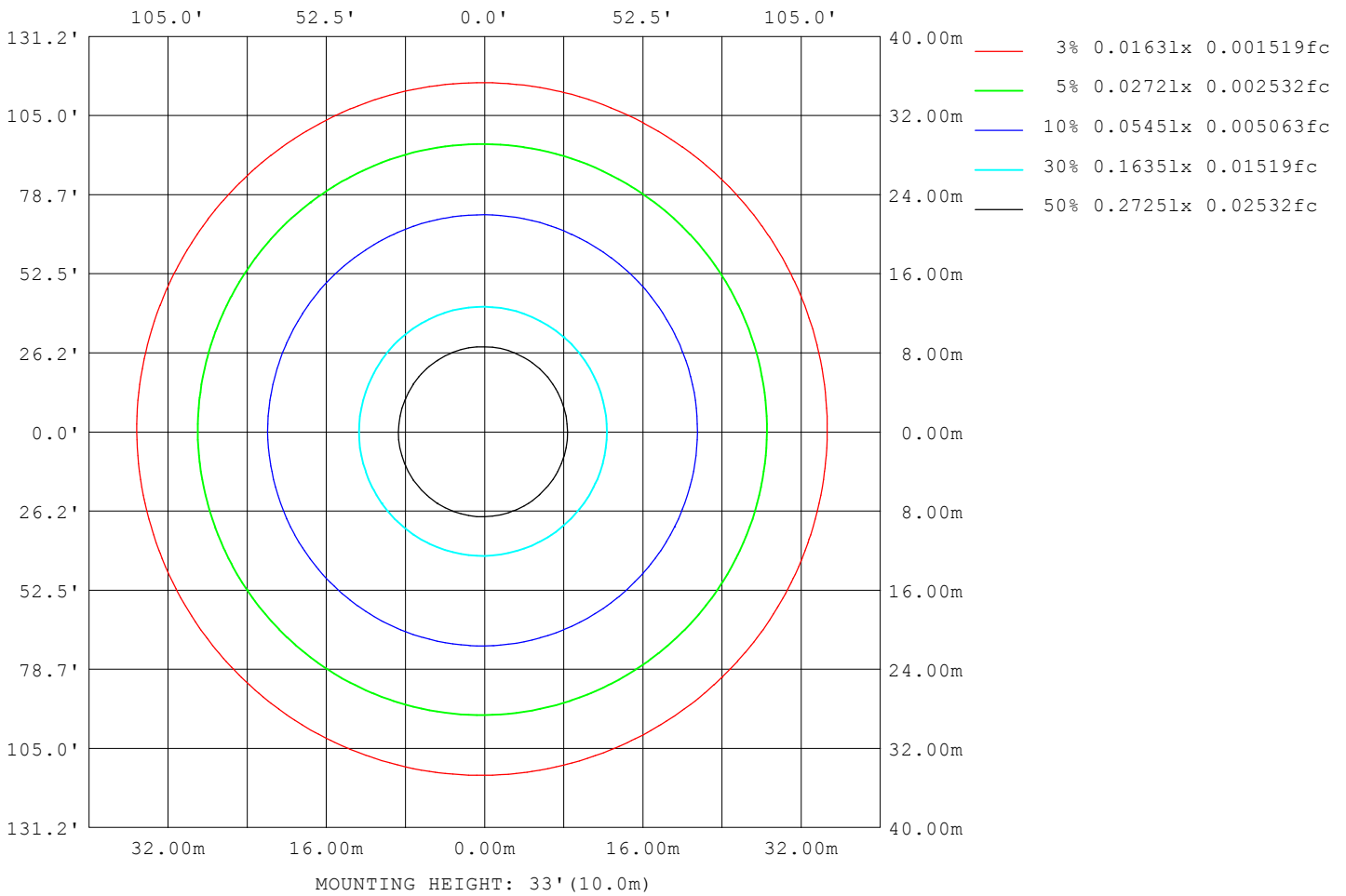
Note:The Curves indicate the illuminated area and the average illumination when the luminaire is at different distance.

C Range: 0 - 360DEG  
 C Interval: 15.0DEG  
 Test Speed: HIGH  
 Temperature:25.3°C  
 Operators:杨守真  
 Test Date:2025-04-25

γ Range: 0 - 180DEG  
 γ Interval: 1.0DEG  
 Test System:EVERFINE GO-2000A\_V1 SYSTEM V2.0.279  
 Humidity:65.0%  
 Test Distance:9.078m [K=1.0000]  
 Remarks:

**ISOLUX DIAGRAM**

Test:U:219.20V I:0.0670A P:7.7400W PF:0.5240 Freq:50.00Hz Lamp Flux:897.235x1 lm		
NAME: Bulb lamp	TYPE:	WEIGHT:
SPEC.:	DIM.:	SERIAL No.:
MFR.:	SUR.:	Shielding Angle:



C Range: 0 - 360DEG  
 C Interval: 15.0DEG  
 Test Speed: HIGH  
 Temperature: 25.3°C  
 Operators: 杨守真  
 Test Date: 2025-04-25

γ Range: 0 - 180DEG  
 γ Interval: 1.0DEG  
 Test System: EVERFINE GO-2000A\_V1 SYSTEM V2.0.279  
 Humidity: 65.0%  
 Test Distance: 9.078m [K=1.0000]  
 Remarks:

**LED Avg.L Report**

Test:U:219.20V I:0.0670A P:7.7400W PF:0.5240 Freq:50.00Hz Lamp Flux:897.235x1 lm		
NAME: Bulb lamp	TYPE:	WEIGHT:
SPEC.:	DIM.:	SERIAL No.:
MFR.:	SUR.:	Shielding Angle:

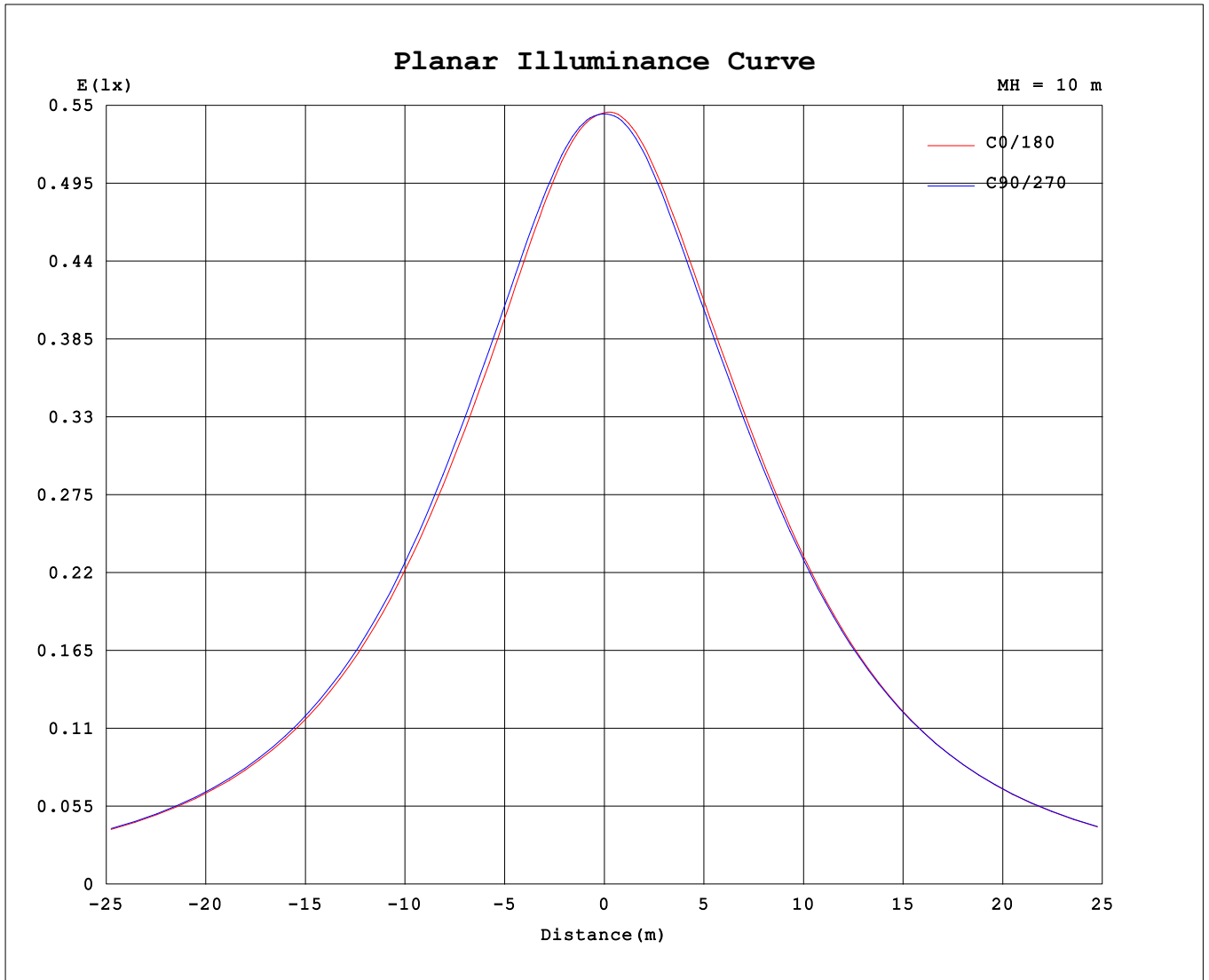
AvgL	cd/m2
L_0~180 (65) av	3325
L_0~180 (75) av	5739
L_0~180 (85) av	17682
L_90~270 (65) av	3360
L_90~270 (75) av	5806
L_90~270 (85) av	17894
L_45 (65) av	3339
L_45 (75) av	5769
L_45 (85) av	17780

Standard: GB/T 29293-2012

C Range: 0 - 360DEG  
 C Interval: 15.0DEG  
 Test Speed: HIGH  
 Temperature:25.3°C  
 Operators:杨守真  
 Test Date:2025-04-25

γ Range: 0 - 180DEG  
 γ Interval: 1.0DEG  
 Test System:EVERFINE GO-2000A\_V1 SYSTEM V2.0.279  
 Humidity:65.0%  
 Test Distance:9.078m [K=1.0000]  
 Remarks:

Planar Illuminance Curve



C Range: 0 - 360DEG  
 C Interval: 15.0DEG  
 Test Speed: HIGH  
 Temperature: 25.3°C  
 Operators: 杨守真  
 Test Date: 2025-04-25

γ Range: 0 - 180DEG  
 γ Interval: 1.0DEG  
 Test System: EVERFINE GO-2000A\_V1 SYSTEM V2.0.279  
 Humidity: 65.0%  
 Test Distance: 9.078m [K=1.0000]  
 Remarks:

LUMINOUS DISTRIBUTION INTENSITY DATA

Test:U:219.20V I:0.0670A P:7.7400W PF:0.5240 Freq:50.00Hz Lamp Flux:897.235x1 lm		
NAME: Bulb lamp	TYPE:	WEIGHT:
SPEC.:	DIM.:	SERIAL No.:
MFR.:	SUR.:	Shielding Angle:

Table--1

UNIT: cd

C (DEG) \ γ (DEG)	0	15	30	45	60	75	90	105	120	135	150	165	180	195	210	225	240	255	270
0	54.4	54.4	54.4	54.4	54.4	54.4	54.4	54.4	54.4	54.4	54.4	54.4	54.4	54.4	54.4	54.4	54.4	54.4	54.4
5	54.3	54.5	54.5	54.5	54.5	54.6	54.6	54.7	54.7	54.7	54.7	54.7	54.7	54.7	54.7	54.6	54.6	54.5	54.6
10	54.4	54.6	54.6	54.7	54.7	54.9	54.9	55.0	55.0	55.1	55.1	55.1	55.1	55.0	55.0	54.9	54.9	54.7	54.7
15	54.5	54.8	54.8	54.9	55.0	55.2	55.2	55.4	55.5	55.5	55.5	55.4	55.4	55.3	55.3	55.2	55.1	55.0	54.9
20	54.8	55.1	55.2	55.3	55.5	55.7	55.8	56.0	56.1	56.1	56.1	56.1	56.1	55.9	55.8	55.7	55.6	55.5	55.4
25	55.5	55.8	55.9	56.1	56.3	56.5	56.7	56.9	57.1	57.1	57.2	57.1	57.1	56.9	56.8	56.7	56.6	56.5	56.3
30	56.6	56.9	57.0	57.2	57.5	57.8	58.1	58.3	58.6	58.6	58.8	58.7	58.6	58.4	58.3	58.3	58.1	58.1	57.8
35	58.3	58.6	58.7	58.8	59.2	59.5	60.0	60.2	60.5	60.6	60.8	60.7	60.7	60.5	60.3	60.4	60.2	60.2	59.9
40	60.3	60.6	60.7	60.8	61.2	61.6	62.1	62.3	62.7	62.7	63.0	63.0	63.0	62.8	62.6	62.8	62.6	62.6	62.2
45	62.6	62.8	62.9	62.9	63.4	63.7	64.3	64.6	65.0	65.1	65.4	65.4	65.4	65.3	65.2	65.4	65.2	65.2	64.8
50	65.0	65.1	65.2	65.2	65.7	66.0	66.7	67.0	67.5	67.6	67.9	67.9	68.0	67.9	67.9	68.1	68.0	68.0	67.5
55	67.5	67.5	67.6	67.6	68.1	68.4	69.1	69.5	70.0	70.1	70.5	70.5	70.7	70.6	70.6	70.9	70.8	70.9	70.4
60	70.1	70.0	70.0	70.0	70.5	70.8	71.5	71.9	72.5	72.6	73.0	73.1	73.3	73.3	73.4	73.8	73.8	73.9	73.4
65	72.5	72.4	72.3	72.3	72.7	73.0	73.7	74.1	74.8	74.9	75.4	75.5	75.9	75.9	76.1	76.5	76.5	76.7	76.2
70	74.8	74.6	74.4	74.4	74.7	75.1	75.7	76.2	76.8	77.0	77.4	77.7	78.1	78.3	78.5	78.9	79.1	79.3	78.9
75	76.8	76.5	76.2	76.2	76.4	76.8	77.4	77.9	78.5	78.8	79.2	79.5	80.1	80.4	80.6	81.1	81.4	81.6	81.2
80	78.6	78.2	77.8	77.7	77.9	78.3	78.9	79.4	79.9	80.2	80.6	81.0	81.7	82.1	82.4	82.9	83.3	83.6	83.3
85	79.9	79.4	78.9	78.8	79.0	79.3	79.8	80.4	80.9	81.2	81.6	82.1	82.8	83.3	83.7	84.3	84.8	85.1	84.9
90	80.8	80.2	79.7	79.5	79.6	79.8	80.3	80.9	81.3	81.7	82.2	82.7	83.5	84.1	84.6	85.2	85.9	86.1	86.0
95	81.3	80.7	80.1	79.9	79.9	80.2	80.6	81.1	81.6	82.0	82.4	83.1	84.0	84.6	85.2	85.8	86.5	86.8	86.7
100	81.6	80.9	80.2	80.0	80.1	80.2	80.6	81.1	81.6	82.0	82.4	83.1	84.1	84.8	85.3	86.1	86.8	87.2	87.1
105	81.6	80.8	80.2	79.9	79.9	80.1	80.4	80.9	81.4	81.8	82.3	82.9	83.9	84.7	85.3	86.2	86.9	87.2	87.1
110	81.3	80.3	79.7	79.4	79.3	79.5	79.7	80.2	80.7	81.1	81.6	82.2	83.2	84.2	84.9	85.7	86.4	86.7	86.7
115	80.4	79.5	78.8	78.4	78.4	78.5	78.7	79.1	79.5	80.0	80.6	81.2	82.2	83.3	84.0	84.7	85.5	85.8	85.7
120	79.3	78.3	77.6	77.3	77.1	77.1	77.3	77.7	78.1	78.6	79.2	79.9	80.8	82.0	82.8	83.5	84.2	84.4	84.4
125	77.5	76.6	75.8	75.5	75.2	75.2	75.2	75.7	76.0	76.6	77.1	77.7	78.7	80.0	80.9	81.2	81.9	82.2	82.3
130	74.6	73.3	72.7	72.5	72.2	72.1	71.9	72.3	72.8	73.3	73.5	74.0	75.0	76.5	77.2	75.8	78.1	78.7	79.1
135	70.4	69.0	68.4	68.5	68.2	68.0	67.6	68.1	68.6	69.1	69.0	69.4	70.5	72.0	69.8	68.3	73.7	74.2	74.6
140	66.2	64.9	64.3	64.2	63.9	63.7	63.4	63.8	64.1	64.7	64.7	65.0	64.6	63.5	55.9	53.8	68.2	69.5	69.8
145	62.0	60.9	60.6	60.1	59.8	60.0	59.4	60.1	60.5	60.5	60.8	61.2	53.5	52.5	43.9	46.6	61.0	65.2	65.3
150	58.6	57.5	56.9	57.3	57.6	56.9	57.6	57.0	58.2	58.5	56.2	56.8	45.0	47.3	48.8	52.8	54.5	61.1	62.4
155	56.6	53.8	52.3	54.2	53.5	53.0	54.0	54.2	54.1	51.9	49.4	43.4	49.9	54.0	51.5	49.2	51.7	55.7	58.3
160	50.7	45.6	43.7	43.5	41.6	41.1	41.3	39.5	38.0	33.3	29.4	21.6	30.7	36.0	36.8	37.1	41.0	42.0	46.2
165	35.8	30.2	26.1	24.9	21.7	21.3	21.5	16.7	14.9	10.6	6.63	5.07	7.92	13.9	16.3	15.6	18.2	21.8	23.2
170	14.9	10.1	6.94	4.66	3.09	4.00	1.74	0.92	0.57	0.34	0.25	0.24	0.60	0.80	1.18	1.86	2.88	1.76	3.21
175	0.28	1.62	0.25	0.96	0.23	0.41	0.22	0.41	0.22	0.23	0.22	0.22	0.32	0.26	0.51	0.27	0.81	0.24	0.24
180	0.27	0.25	0.26	0.26	0.21	0.22	0.22	0.23	0.22	0.23	0.22	0.24	0.25	0.26	0.25	0.24	0.25	0.22	0.22

C Range: 0 - 360DEG  
 C Interval: 15.0DEG  
 Test Speed: HIGH  
 Temperature:25.3℃  
 Operators:杨守真  
 Test Date:2025-04-25

γ Range: 0 - 180DEG  
 γ Interval: 1.0DEG  
 Test System:EVERFINE GO-2000A\_V1 SYSTEM V2.0.279  
 Humidity:65.0%  
 Test Distance:9.078m [K=1.0000]  
 Remarks:

LUMINOUS DISTRIBUTION INTENSITY DATA

Test:U:219.20V I:0.0670A P:7.7400W PF:0.5240 Freq:50.00Hz Lamp Flux:897.235x1 lm		
NAME: Bulb lamp	TYPE:	WEIGHT:
SPEC.:	DIM.:	SERIAL No.:
MFR.:	SUR.:	Shielding Angle:

Table--2

UNIT: cd

C (DEG) \ γ (DEG)	285	300	315	330	345														
0	54.4	54.4	54.4	54.4	54.4														
5	54.5	54.5	54.4	54.4	54.3														
10	54.6	54.6	54.5	54.5	54.4														
15	54.8	54.8	54.6	54.6	54.5														
20	55.2	55.2	55.0	55.0	54.8														
25	56.2	56.0	55.8	55.7	55.5														
30	57.6	57.3	57.1	56.9	56.7														
35	59.6	59.2	59.0	58.6	58.5														
40	62.0	61.5	61.2	60.8	60.6														
45	64.5	63.9	63.6	63.2	62.9														
50	67.2	66.5	66.2	65.7	65.3														
55	70.0	69.3	68.9	68.3	67.9														
60	73.0	72.2	71.7	71.0	70.5														
65	75.8	75.0	74.4	73.7	73.1														
70	78.4	77.6	77.0	76.2	75.6														
75	80.7	79.9	79.3	78.5	77.7														
80	82.8	82.0	81.3	80.5	79.6														
85	84.4	83.7	82.9	82.0	81.0														
90	85.5	84.8	84.0	83.1	82.0														
95	86.2	85.6	84.7	83.7	82.5														
100	86.6	86.1	85.1	84.1	82.8														
105	86.7	86.2	85.2	84.2	82.9														
110	86.3	85.8	84.9	83.8	82.5														
115	85.3	84.8	83.9	82.9	81.6														
120	84.0	83.5	82.6	81.7	80.4														
125	81.9	81.5	80.8	79.9	78.6														
130	78.7	78.2	77.7	76.9	75.7														
135	74.2	73.8	73.3	72.8	71.9														
140	69.5	69.1	68.6	68.3	67.5														
145	65.1	65.2	64.3	64.1	63.4														
150	61.9	61.7	61.4	60.1	59.5														
155	58.3	57.5	57.6	57.6	57.4														
160	48.1	47.8	51.4	52.1	51.2														
165	24.1	27.4	32.3	34.5	34.6														
170	4.74	6.31	8.80	10.7	11.2														
175	0.24	0.23	0.27	0.24	0.28														
180	0.23	0.24	0.24	0.22	0.24														

C Range: 0 - 360DEG  
 C Interval: 15.0DEG  
 Test Speed: HIGH  
 Temperature:25.3°C  
 Operators:杨守真  
 Test Date:2025-04-25

γ Range: 0 - 180DEG  
 γ Interval: 1.0DEG  
 Test System:EVERFINE GO-2000A\_V1 SYSTEM V2.0.279  
 Humidity:65.0%  
 Test Distance:9.078m [K=1.0000]  
 Remarks: