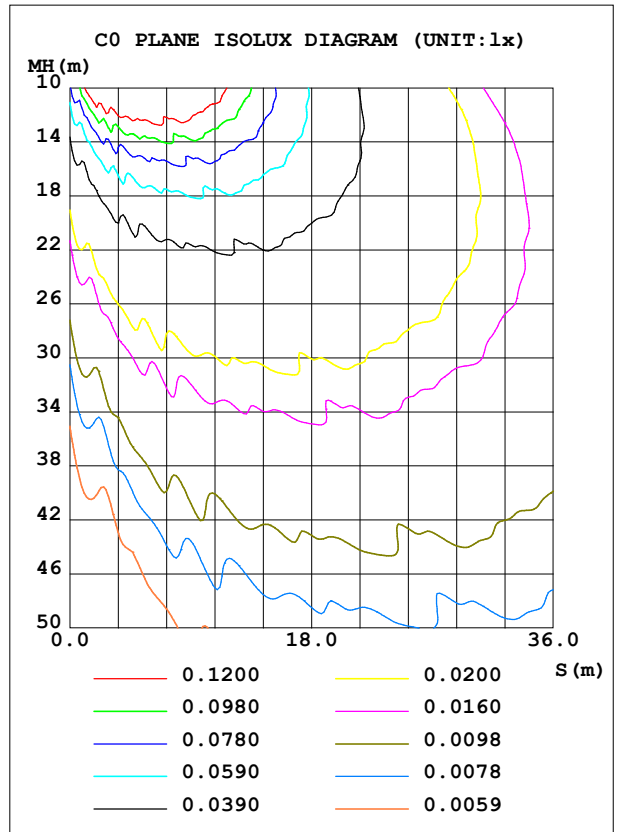
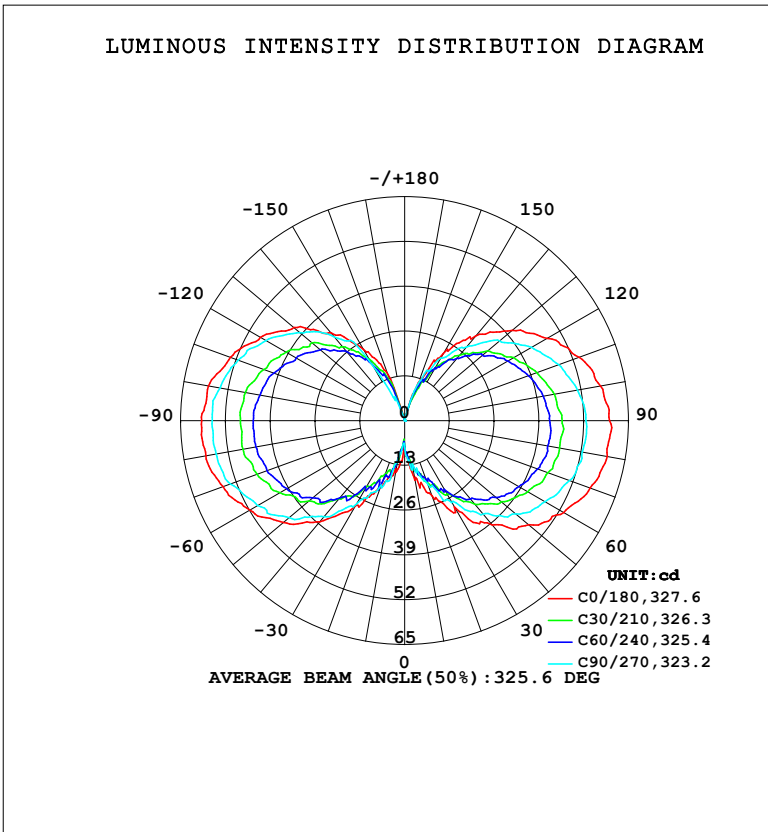


LUMINAIRE PHOTOMETRIC TEST REPORT

Test:U:219.40V I:0.0360A P:4.2100W PF:0.5300 Freq:50.00Hz Lamp Flux:489.012x1 lm		
NAME: Candle bulb	TYPE:	WEIGHT:
SPEC.:	DIM.:	SERIAL No.:
MFR.:	SUR.:	Shielding Angle:

DATA OF LAMP		PHOTOMETRIC DATA			
MODEL	C35-N04-WS1-3000k	Imax (cd)	60.26	S/MH (C0/180)	4.13
NOMINAL POWER (W)	4	LOR (%)	100.0	S/MH (C90/270)	4.06
RATED VOLTAGE (V)	220	TOTAL FLUX (lm)	489.01	η UP, DN (C0-180)	22.9, 26.0
NOMINAL FLUX (lm)	489.012	CIE CLASS	DIFFUSE	η UP, DN (C180-360)	24.3, 26.8
LAMPS INSIDE	1	η up (%)	47.2	CIBSE SHR NOM	1.75
TEST VOLTAGE (V)	219.4	η down (%)	52.8	CIBSE SHR MAX	1.75



C Range: 0 - 360DEG
 C Interval: 15.0DEG
 Test Speed: HIGH
 Temperature: 25.3°C
 Operators: 杨守真
 Test Date: 2025-04-27

γ Range: 0 - 180DEG
 γ Interval: 1.0DEG
 Test System: EVERFINE GO-2000A_V1 SYSTEM V2.0.279
 Humidity: 65.0%
 Test Distance: 9.078m [K=1.0000]
 Remarks:

ZONAL FLUX DIAGRAM

ZONAL FLUX DIAGRAM:

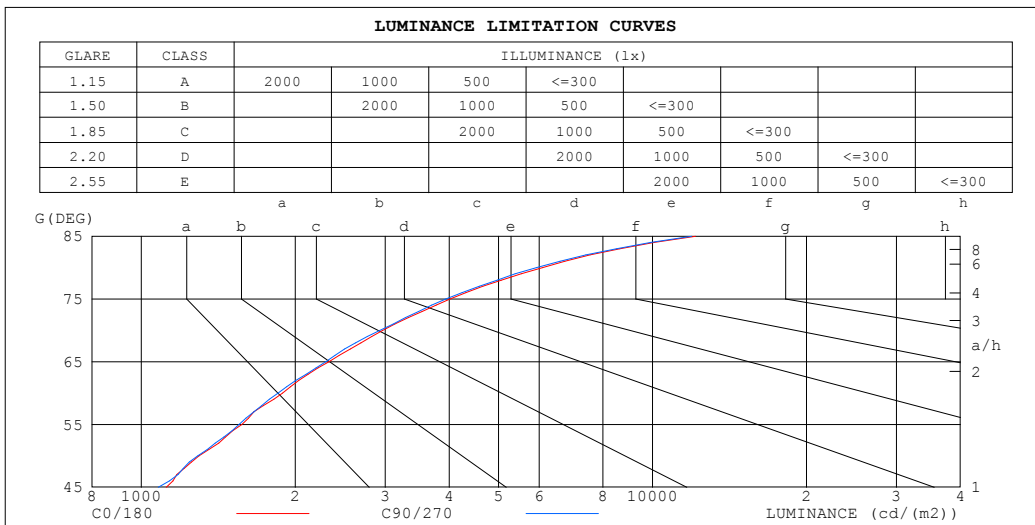
γ	C0	C45	C90	C135	C180	C225	C270	C315	γ	Φ zone	Φ total	%lum,lamp
10	17.56	13.83	12.56	15.74	15.35	12.53	11.17	11.06	0- 10	1.073	1.073	0.22,0.22
20	23.16	18.50	19.59	19.41	20.37	19.36	19.89	20.49	10- 20	4.852	5.925	1.21,1.21
30	28.87	24.03	27.48	24.53	28.42	22.06	27.90	25.23	20- 30	10.74	16.66	3.41,3.41
40	39.60	29.99	35.48	31.56	38.30	29.98	36.40	32.28	30- 40	19.06	35.72	7.3,7.3
50	47.04	34.37	42.15	37.35	45.97	35.62	43.88	38.50	40- 50	29.01	64.73	13.2,13.2
60	53.35	38.27	47.09	40.73	51.98	40.01	49.32	43.04	50- 60	38.69	103.4	21.1,21.1
70	57.30	40.63	50.96	43.56	56.06	42.33	53.77	47.04	60- 70	46.87	150.3	30.7,30.7
80	59.69	41.84	52.40	44.33	58.59	44.07	55.56	48.08	70- 80	52.82	203.1	41.5,41.5
90	59.52	41.62	52.59	44.50	58.91	43.64	55.84	48.60	80- 90	55.33	258.4	52.8,52.8
100	57.76	40.31	50.95	42.77	57.82	43.18	54.41	46.67	90-100	54.60	313.0	64,64
110	53.86	37.83	47.55	40.22	53.83	40.57	51.44	44.13	100-110	50.48	363.5	74.3,74.3
120	47.73	34.22	42.59	35.85	48.41	37.13	46.53	39.32	110-120	43.49	407.0	83.2,83.2
130	40.82	29.53	36.03	30.78	42.05	32.97	39.77	34.72	120-130	34.57	441.6	90.3,90.3
140	32.06	23.52	27.93	24.54	33.40	26.69	31.67	27.54	130-140	24.89	466.5	95.4,95.4
150	22.44	17.08	21.10	18.40	24.00	19.29	17.93	11.63	140-150	15.18	481.6	98.5,98.5
160	11.83	4.742	11.08	10.66	14.26	10.66	0.4991	0.3626	150-160	6.554	488.2	99.8,99.8
170	0.1010	0.0804	0.0910	0.0819	0.0831	0.0912	0.0803	0.0994	160-170	0.8055	489.0	100,100
180	0.0831	0.0697	0.0803	0.0760	0.0831	0.0697	0.0803	0.0760	170-180	0.0078	489.0	100,100
DEG	LUMINOUS INTENSITY:cd									UNIT:lm		

C Range: 0 - 360DEG
 C Interval: 15.0DEG
 Test Speed: HIGH
 Temperature:25.3°C
 Operators:杨守真
 Test Date:2025-04-27

γ Range: 0 - 180DEG
 γ Interval: 1.0DEG
 Test System:EVERFINE GO-2000A_V1 SYSTEM V2.0.279
 Humidity:65.0%
 Test Distance:9.078m [K=1.0000]
 Remarks:

LUMINANCE LIMITATION CURVES

Test:U:219.40V I:0.0360A P:4.2100W PF:0.5300 Freq:50.00Hz Lamp Flux:489.012x1 lm		
NAME: Candle bulb	TYPE:	WEIGHT:
SPEC.:	DIM.:	SERIAL No.:
MFR.:	SUR.:	Shielding Angle:



LUMINANCE cd/(m2)		
G (DEG)	C0/180	C90/270
85	12122	11916
80	6086	5927
75	4016	3937
70	2967	2926
65	2328	2293
60	1889	1850
55	1573	1552
50	1296	1288
45	1118	1080

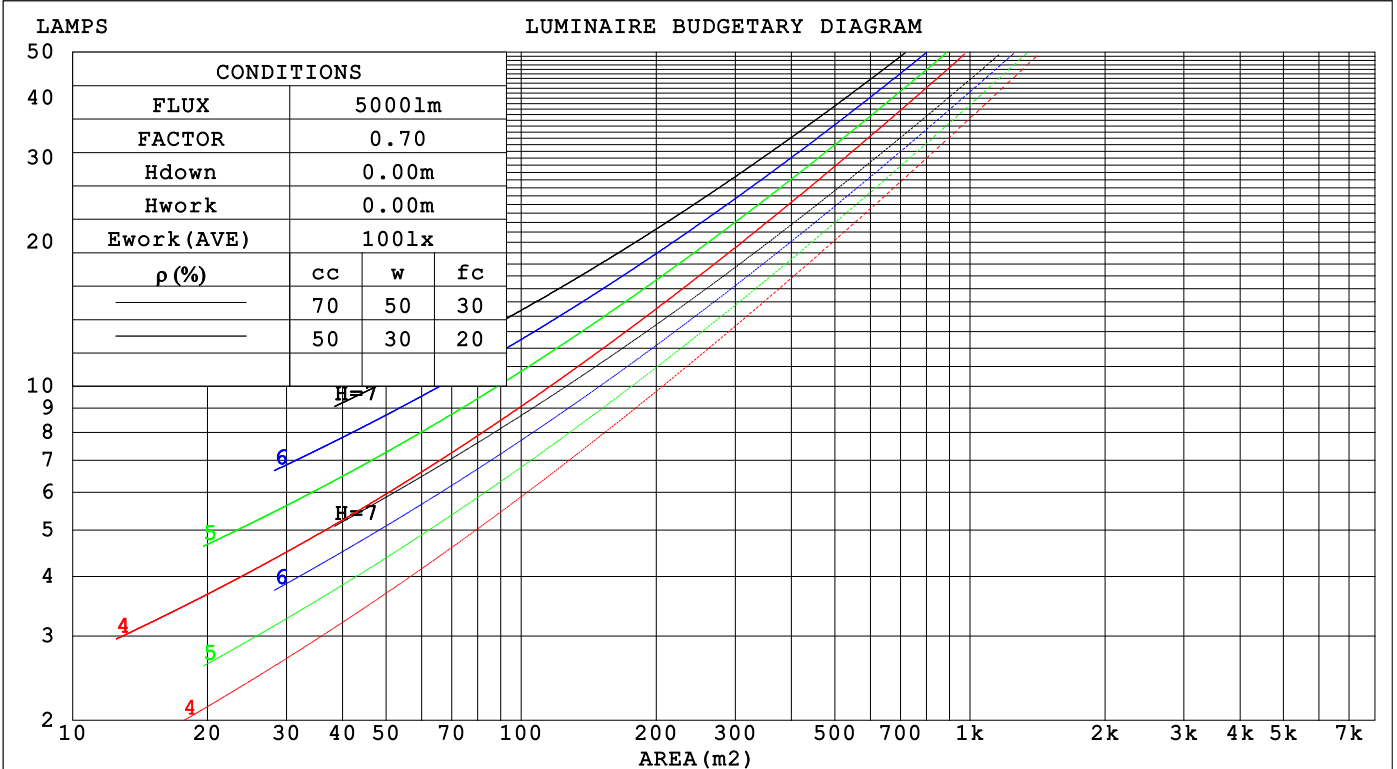
C Range: 0 - 360DEG
 C Interval: 15.0DEG
 Test Speed: HIGH
 Temperature:25.3°C
 Operators:杨守真
 Test Date:2025-04-27

γ Range: 0 - 180DEG
 γ Interval: 1.0DEG
 Test System:EVERFINE GO-2000A_V1 SYSTEM V2.0.279
 Humidity:65.0%
 Test Distance:9.078m [K=1.0000]
 Remarks:

CU AND LUMINAIRE BUDGETARY ESTIMATE DIAGRAM

Test:U:219.40V I:0.0360A P:4.2100W PF:0.5300 Freq:50.00Hz Lamp Flux:489.012x1 lm		
NAME: Candle bulb	TYPE:	WEIGHT:
SPEC.:	DIM.:	SERIAL No.:
MFR.:	SUR.:	Shielding Angle:

pcc	80%			70%			50%			30%			10%			0
	50%	30%	10%	50%	30%	10%	50%	30%	10%	50%	30%	10%	50%	30%	10%	
p _w	50%	30%	10%	50%	30%	10%	50%	30%	10%	50%	30%	10%	50%	30%	10%	
p _{fc}	20%			20%			20%			20%			20%			
RCR	RCR:Room Cavity Ratio Coefficients of Utilization(CU)															
0.0	1.08	1.08	1.08	.00	.00	.00	.85	.85	.85	.71	.71	.71	.59	.59	.59	.53
1.0	.86	.80	.74	.79	.73	.68	.66	.62	.58	.54	.51	.48	.43	.40	.38	.33
2.0	.72	.63	.56	.66	.58	.52	.54	.48	.43	.44	.39	.35	.34	.31	.28	.23
3.0	.61	.52	.44	.56	.47	.41	.46	.39	.34	.37	.32	.27	.29	.25	.21	.17
4.0	.53	.43	.36	.48	.40	.33	.40	.33	.27	.32	.26	.22	.24	.20	.17	.13
5.0	.46	.37	.29	.42	.34	.27	.35	.28	.22	.28	.22	.18	.21	.17	.14	.10
6.0	.41	.32	.25	.38	.29	.23	.31	.24	.19	.25	.19	.15	.19	.15	.11	.08
7.0	.37	.27	.21	.34	.25	.19	.28	.21	.16	.22	.17	.13	.17	.13	.09	.07
8.0	.33	.24	.18	.30	.22	.17	.25	.18	.14	.20	.15	.11	.16	.11	.08	.06
9.0	.30	.21	.16	.27	.20	.15	.23	.16	.12	.18	.13	.10	.14	.10	.07	.05
10.0	.27	.19	.14	.25	.18	.13	.21	.15	.11	.17	.12	.08	.13	.09	.06	.04



C Range: 0 - 360DEG
 C Interval: 15.0DEG
 Test Speed: HIGH
 Temperature: 25.3°C
 Operators: 杨守真
 Test Date: 2025-04-27

γ Range: 0 - 180DEG
 γ Interval: 1.0DEG
 Test System: EVERFINE GO-2000A_V1 SYSTEM V2.0.279
 Humidity: 65.0%
 Test Distance: 9.078m [K=1.0000]
 Remarks:

WEC AND CCEC

Test:U:219.40V I:0.0360A P:4.2100W PF:0.5300 Freq:50.00Hz								
Lamp Flux:489.012x1 lm								
NAME: Candle bulb			TYPE:			WEIGHT:		
SPEC.:			DIM.:			SERIAL No.:		
MFR.:			SUR.:			Shielding Angle:		

ρ _{CC}	80%			70%			50%			30%			10%			0
ρ _w	50%	30%	10%	50%	30%	10%	50%	30%	10%	50%	30%	10%	50%	30%	10%	0
ρ _{fc}	20%			20%			20%			20%			20%			0
RCR	RCR:Room Cavity Ratio						Wall Exitance Coefficients (WEC)									
0.0																
1.0	.440	.250	.079	.418	.239	.076	.378	.217	.069	.340	.196	.063	.306	.177	.057	
2.0	.362	.199	.061	.343	.189	.058	.306	.170	.053	.271	.152	.048	.240	.136	.043	
3.0	.313	.167	.050	.295	.158	.048	.261	.142	.043	.230	.126	.039	.201	.111	.034	
4.0	.277	.144	.042	.261	.136	.040	.230	.122	.036	.201	.108	.033	.174	.094	.029	
5.0	.249	.127	.037	.234	.120	.035	.205	.107	.031	.179	.094	.028	.154	.082	.025	
6.0	.226	.113	.032	.212	.107	.031	.186	.095	.028	.161	.084	.025	.138	.073	.022	
7.0	.207	.102	.029	.194	.097	.028	.170	.086	.025	.147	.075	.022	.125	.065	.019	
8.0	.191	.093	.026	.179	.088	.025	.156	.078	.022	.135	.068	.020	.115	.059	.017	
9.0	.177	.086	.024	.166	.081	.023	.145	.072	.020	.125	.063	.018	.106	.054	.016	
10.0	.165	.079	.022	.155	.075	.021	.135	.066	.019	.116	.058	.016	.099	.050	.014	

ρ _{CC}	80%			70%			50%			30%			10%			0
ρ _w	50%	30%	10%	50%	30%	10%	50%	30%	10%	50%	30%	10%	50%	30%	10%	0
ρ _{fc}	20%			20%			20%			20%			20%			0
RCR	RCR:Room Cavity Ratio						Ceiling Cavity Exitance Coefficients (CCEC)									
0.0	.550	.550	.550	.470	.470	.470	.321	.321	.321	.184	.184	.184	.059	.059	.059	
1.0	.552	.517	.486	.472	.444	.419	.323	.305	.289	.186	.177	.168	.060	.057	.054	
2.0	.546	.496	.454	.468	.427	.393	.321	.296	.274	.185	.172	.161	.059	.056	.052	
3.0	.539	.481	.435	.462	.415	.377	.318	.288	.264	.183	.168	.156	.059	.055	.051	
4.0	.532	.470	.422	.456	.406	.367	.314	.283	.258	.182	.166	.153	.058	.054	.050	
5.0	.524	.461	.414	.450	.399	.360	.310	.279	.254	.180	.164	.151	.058	.053	.050	
6.0	.517	.454	.408	.444	.393	.355	.307	.275	.251	.178	.162	.149	.057	.053	.049	
7.0	.510	.447	.404	.439	.388	.352	.303	.272	.249	.176	.160	.148	.057	.052	.049	
8.0	.503	.442	.400	.433	.384	.349	.300	.269	.248	.174	.159	.148	.056	.052	.049	
9.0	.497	.438	.398	.428	.380	.347	.297	.267	.246	.173	.158	.147	.056	.052	.049	
10.0	.491	.434	.396	.423	.377	.345	.294	.265	.245	.171	.157	.146	.056	.051	.049	

C Range: 0 - 360DEG
 C Interval: 15.0DEG
 Test Speed: HIGH
 Temperature:25.3°C
 Operators:杨守真
 Test Date:2025-04-27

γ Range: 0 - 180DEG
 γ Interval: 1.0DEG
 Test System:EVERFINE GO-2000A_V1 SYSTEM V2.0.279
 Humidity:65.0%
 Test Distance:9.078m [K=1.0000]
 Remarks:

UGR(Unified Glare Rating) Table

Test:U:219.40V I:0.0360A P:4.2100W PF:0.5300 Freq:50.00Hz										
Lamp Flux:489.012x1 lm										
NAME: Candle bulb					TYPE:			WEIGHT:		
SPEC.:					DIM.:			SERIAL No.:		
MFR.:					SUR.:			Shielding Angle:		
ceiling/cavity	0.7	0.7	0.5	0.5	0.3	0.7	0.7	0.5	0.5	0.3
walls	0.5	0.3	0.5	0.3	0.3	0.5	0.3	0.5	0.3	0.3
working plane	0.2	0.2	0.2	0.2	0.2	0.2	0.2	0.2	0.2	0.2
Room dimensions	Viewed crosswise					Viewed endwise				
x = 2H y = 2H	14.2	15.4	15.0	16.2	17.4	13.8	14.9	14.6	15.8	16.9
3H	17.9	19.0	18.8	19.9	21.0	17.5	18.6	18.4	19.5	20.6
4H	20.0	21.0	20.8	21.9	23.0	19.6	20.6	20.5	21.5	22.7
6H	22.2	23.1	23.1	24.0	25.2	21.8	22.8	22.7	23.7	24.9
8H	23.4	24.3	24.3	25.2	26.4	23.1	24.0	24.0	24.9	26.1
12H	24.7	25.6	25.6	26.5	27.7	24.5	25.3	25.4	26.3	27.5
4H 2H	15.0	16.0	15.9	16.9	18.1	14.6	15.6	15.5	16.5	17.7
3H	18.8	19.7	19.8	20.7	21.9	18.4	19.3	19.3	20.2	21.4
4H	21.0	21.8	22.0	22.8	24.0	20.6	21.4	21.5	22.3	23.6
6H	23.5	24.2	24.4	25.1	26.4	23.0	23.8	24.0	24.7	26.0
8H	24.8	25.4	25.7	26.4	27.7	24.4	25.1	25.3	26.0	27.3
12H	26.2	26.9	27.2	27.9	29.1	25.9	26.5	26.9	27.5	28.8
8H 4H	21.6	22.2	22.5	23.2	24.5	21.2	21.9	22.2	22.8	24.1
6H	24.3	24.8	25.2	25.8	27.1	23.8	24.4	24.8	25.4	26.7
8H	25.8	26.3	26.7	27.3	28.6	25.3	25.9	26.3	26.9	28.2
12H	27.5	28.0	28.5	29.0	30.3	27.1	27.6	28.1	28.6	29.9
12H 4H	21.7	22.3	22.7	23.3	24.6	21.4	22.0	22.4	23.0	24.3
6H	24.5	25.0	25.5	26.0	27.3	24.1	24.6	25.1	25.6	26.9
8H	26.1	26.5	27.1	27.6	28.9	25.7	26.1	26.7	27.2	28.5
Variations with the observer position at spacings(CIE Pub.117):										
S = 1.0H	+ 0.1 / - 0.1					+ 0.1 / - 0.1				
1.5H	+ 0.2 / - 0.3					+ 0.2 / - 0.3				
2.0H	+ 0.3 / - 0.4					+ 0.3 / - 0.4				

CIE Pub.117, 489.0 lm Total Lamp Luminous Flux Correct (8log(F/F0) = -2.5)
 Area: 0.0528 m2

C Range: 0 - 360DEG
 C Interval: 15.0DEG
 Test Speed: HIGH
 Temperature:25.3°C
 Operators:杨守真
 Test Date:2025-04-27

γ Range: 0 - 180DEG
 γ Interval: 1.0DEG
 Test System:EVERFINE GO-2000A_V1 SYSTEM V2.0.279
 Humidity:65.0%
 Test Distance:9.078m [K=1.0000]
 Remarks:

UTILIZATION FACTORS TABLE

Test:U:219.40V I:0.0360A P:4.2100W PF:0.5300 Freq:50.00Hz Lamp Flux:489.012x1 lm		
NAME: Candle bulb	TYPE:	WEIGHT:
SPEC.:	DIM.:	SERIAL No.:
MFR.:	SUR.:	Shielding Angle:

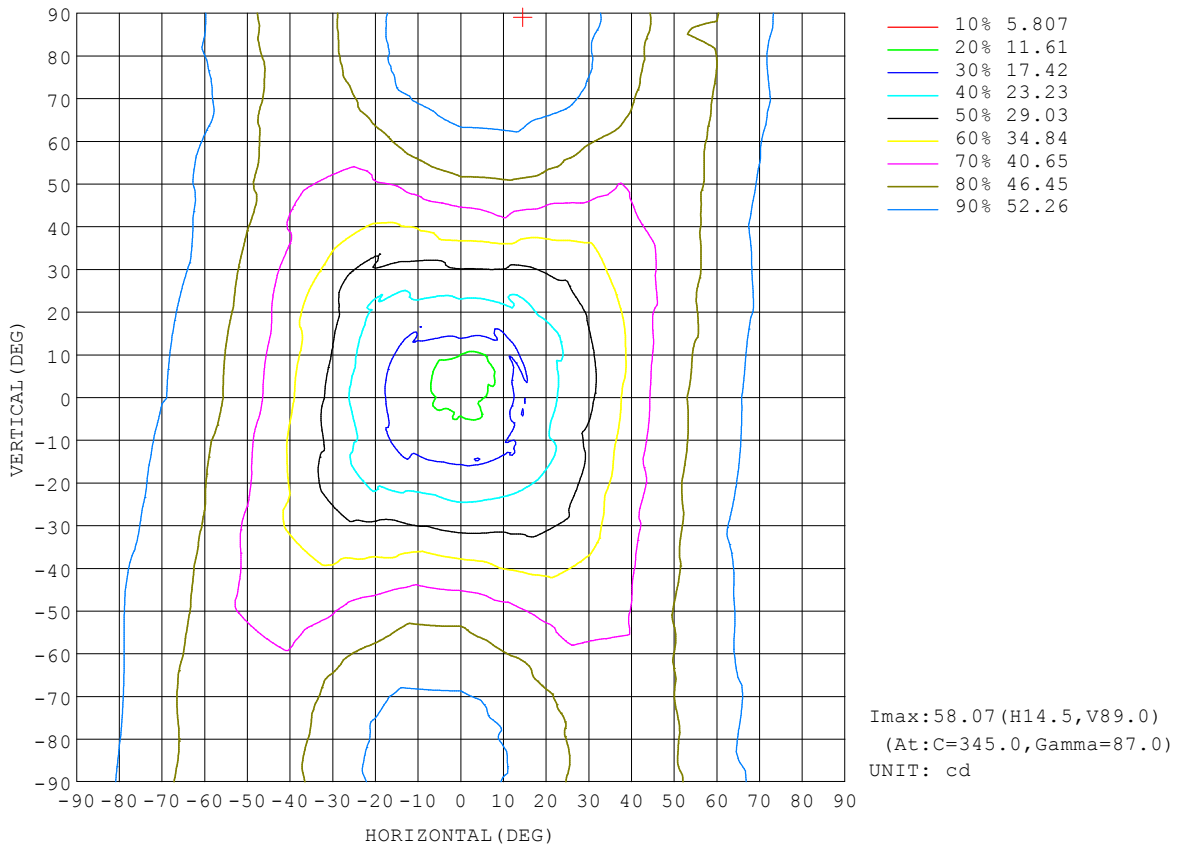
REFLECTANCE										
Ceiling	0.8	0.8	0.8	0.7	0.7	0.7	0.5	0.5	0.5	0
Walls	0.7	0.5	0.3	0.7	0.5	0.3	0.7	0.5	0.3	0
Working plane	0.2	0.2	0.2	0.2	0.2	0.2	0.2	0.2	0.2	0
ROOM INDEX	UTILIZATION FACTORS (PERCENT) $k(RI) \times RCR = 5$									
k = 0.60	34	21	14	33	20	13	29	19	12	5
0.80	43	28	20	40	27	19	36	24	17	8
1.00	50	35	26	47	33	24	41	32	22	11
1.25	57	42	32	53	39	30	46	35	27	14
1.50	62	48	37	58	45	35	50	39	31	16
2.00	70	56	46	65	53	44	56	46	38	21
2.50	75	63	53	70	58	50	59	50	43	24
3.00	80	68	58	74	63	55	63	54	48	26
4.00	85	75	66	79	70	62	67	60	54	30
5.00	89	80	72	82	74	67	69	63	58	33
ROOM INDEX	UF(total)									Direct
According to DIN EN 13032-2 2004			Suspended				SHRNOM = 1.25			

C Range: 0 - 360DEG
 C Interval: 15.0DEG
 Test Speed: HIGH
 Temperature:25.3°C
 Operators:杨守真
 Test Date:2025-04-27

γ Range: 0 - 180DEG
 γ Interval: 1.0DEG
 Test System:EVERFINE GO-2000A_V1 SYSTEM V2.0.279
 Humidity:65.0%
 Test Distance:9.078m [K=1.0000]
 Remarks:

ISOCANDELA DIAGRAM

Test:U:219.40V I:0.0360A P:4.2100W PF:0.5300 Freq:50.00Hz Lamp Flux:489.012x1 lm		
NAME: Candle bulb	TYPE:	WEIGHT:
SPEC.:	DIM.:	SERIAL No.:
MFR.:	SUR.:	Shielding Angle:

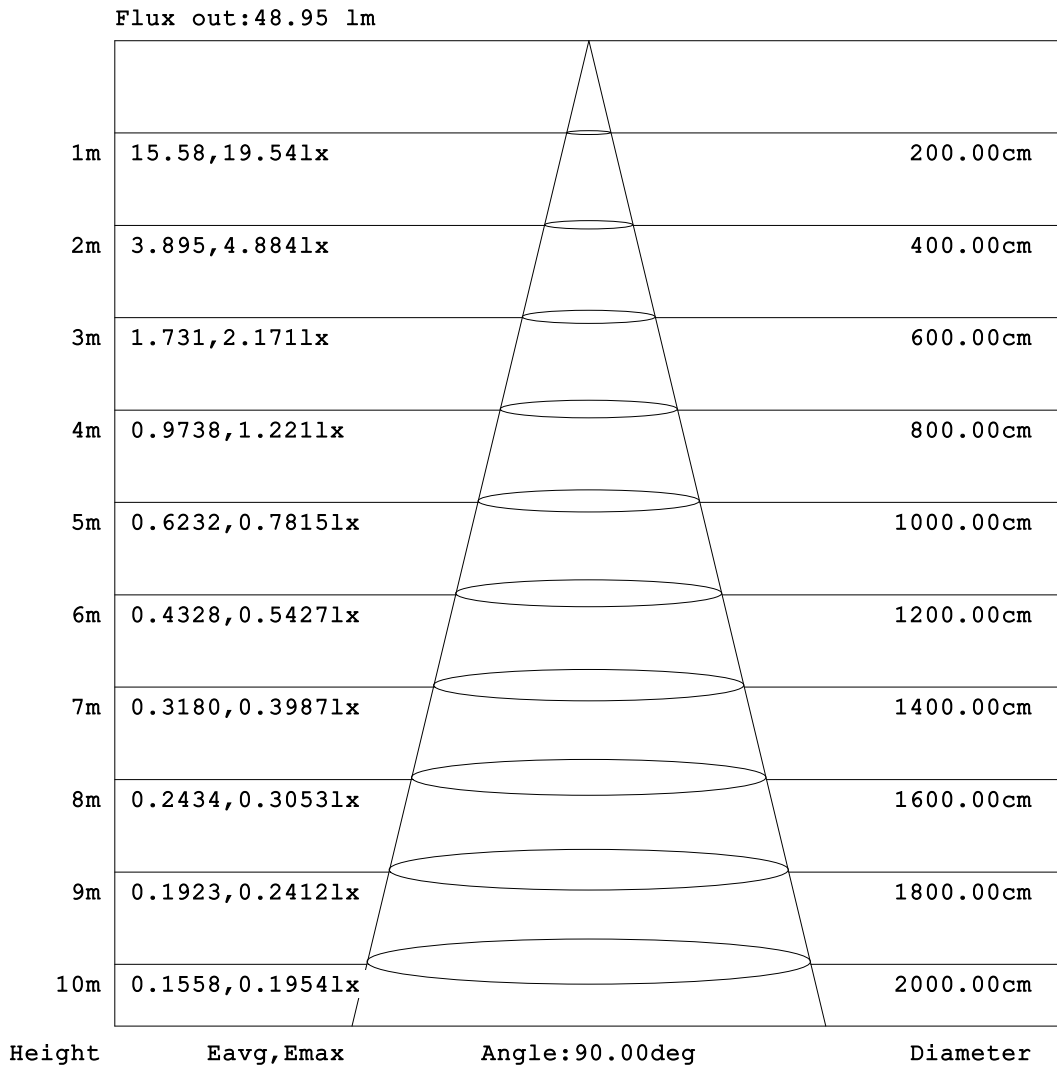


C Range: 0 - 360DEG
 C Interval: 15.0DEG
 Test Speed: HIGH
 Temperature:25.3°C
 Operators:杨守真
 Test Date:2025-04-27

γ Range: 0 - 180DEG
 γ Interval: 1.0DEG
 Test System:EVERFINE GO-2000A_V1 SYSTEM V2.0.279
 Humidity:65.0%
 Test Distance:9.078m [K=1.0000]
 Remarks:

AAI Figure

Test:U:219.40V I:0.0360A P:4.2100W PF:0.5300 Freq:50.00Hz Lamp Flux:489.012x1 lm		
NAME: Candle bulb	TYPE:	WEIGHT:
SPEC.:	DIM.:	SERIAL No.:
MFR.:	SUR.:	Shielding Angle:



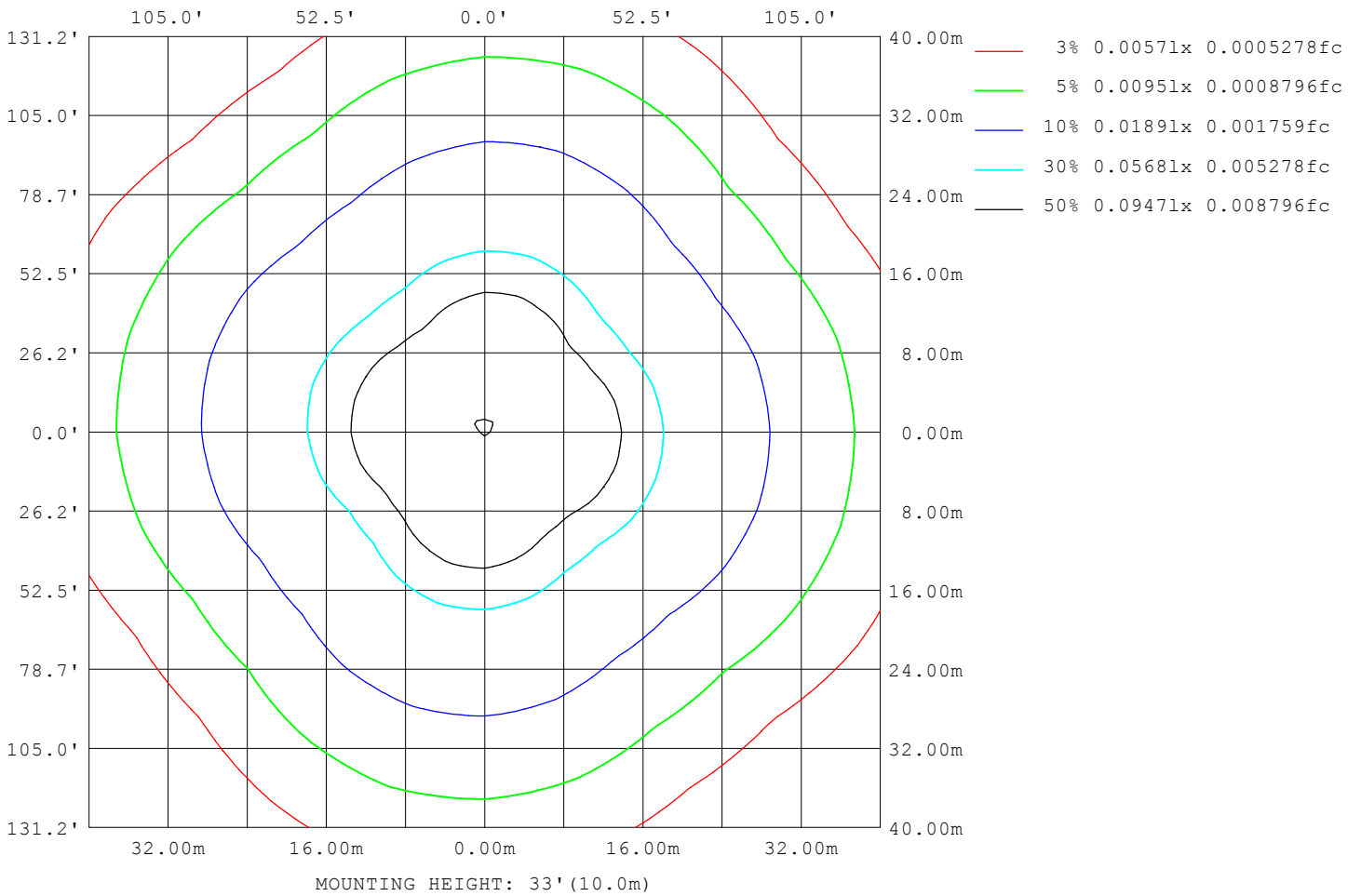
Note: The Curves indicate the illuminated area and the average illumination when the luminaire is at different distance.

C Range: 0 - 360DEG
C Interval: 15.0DEG
Test Speed: HIGH
Temperature: 25.3°C
Operators: 杨守真
Test Date: 2025-04-27

γ Range: 0 - 180DEG
γ Interval: 1.0DEG
Test System: EVERFINE GO-2000A_V1 SYSTEM V2.0.279
Humidity: 65.0%
Test Distance: 9.078m [K=1.0000]
Remarks:

ISOLUX DIAGRAM

Test:U:219.40V I:0.0360A P:4.2100W PF:0.5300 Freq:50.00Hz Lamp Flux:489.012x1 lm		
NAME: Candle bulb	TYPE:	WEIGHT:
SPEC.:	DIM.:	SERIAL No.:
MFR.:	SUR.:	Shielding Angle:



C Range: 0 - 360DEG
 C Interval: 15.0DEG
 Test Speed: HIGH
 Temperature: 25.3°C
 Operators: 杨守真
 Test Date: 2025-04-27

γ Range: 0 - 180DEG
 γ Interval: 1.0DEG
 Test System: EVERFINE GO-2000A_V1 SYSTEM V2.0.279
 Humidity: 65.0%
 Test Distance: 9.078m [K=1.0000]
 Remarks:

LED Avg.L Report

Test:U:219.40V I:0.0360A P:4.2100W PF:0.5300 Freq:50.00Hz Lamp Flux:489.012x1 lm		
NAME: Candle bulb	TYPE:	WEIGHT:
SPEC.:	DIM.:	SERIAL No.:
MFR.:	SUR.:	Shielding Angle:

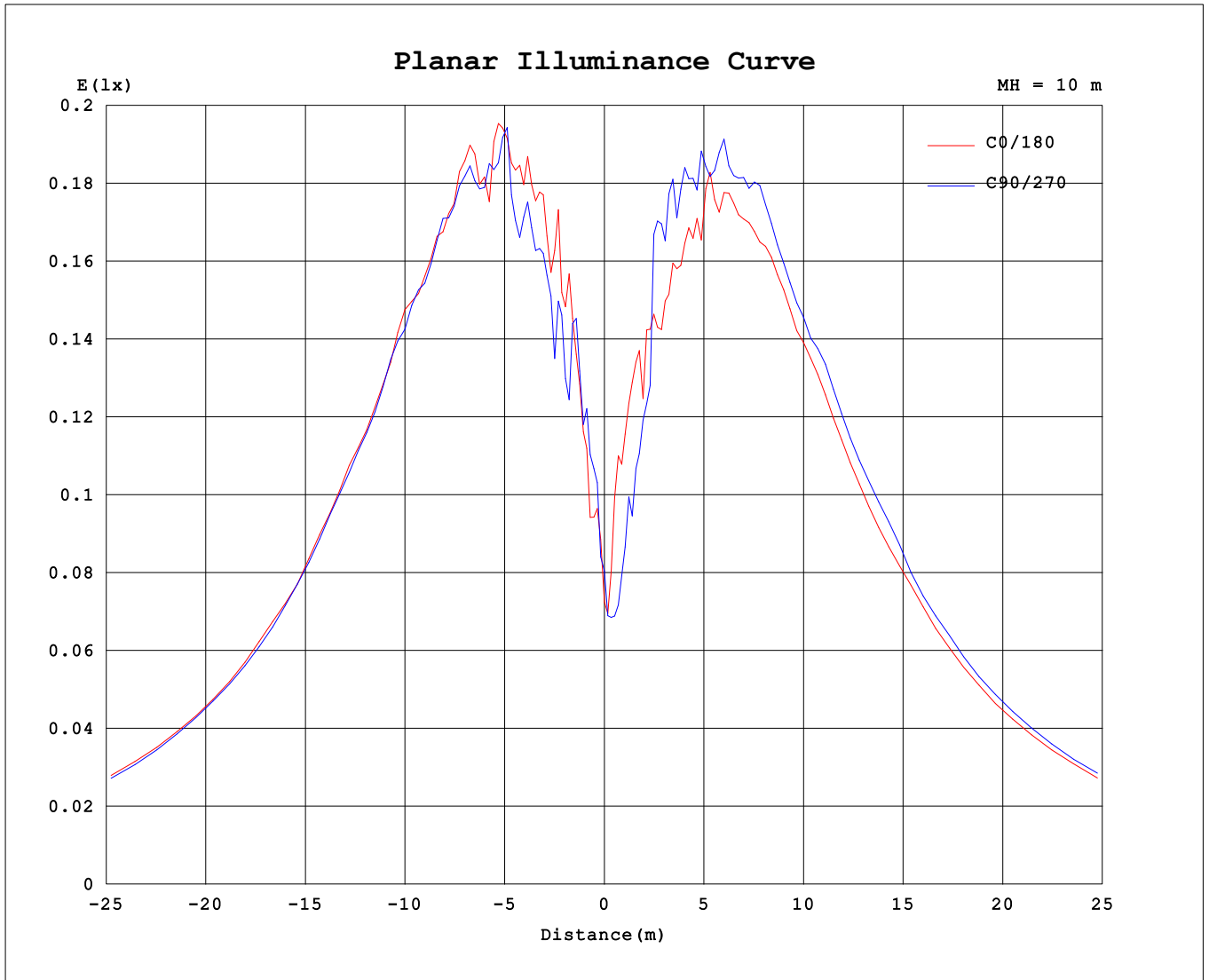
AvgL	cd/m2
L_0~180 (65) av	2466
L_0~180 (75) av	4268
L_0~180 (85) av	12902
L_90~270 (65) av	2256
L_90~270 (75) av	3911
L_90~270 (85) av	11807
L_45 (65) av	1888
L_45 (75) av	3231
L_45 (85) av	9717

Standard: GB/T 29293-2012

C Range: 0 - 360DEG
 C Interval: 15.0DEG
 Test Speed: HIGH
 Temperature:25.3°C
 Operators:杨守真
 Test Date:2025-04-27

γ Range: 0 - 180DEG
 γ Interval: 1.0DEG
 Test System:EVERFINE GO-2000A_V1 SYSTEM V2.0.279
 Humidity:65.0%
 Test Distance:9.078m [K=1.0000]
 Remarks:

Planar Illuminance Curve



C Range: 0 - 360DEG
 C Interval: 15.0DEG
 Test Speed: HIGH
 Temperature: 25.3°C
 Operators: 杨守真
 Test Date: 2025-04-27

γ Range: 0 - 180DEG
 γ Interval: 1.0DEG
 Test System: EVERFINE GO-2000A_V1 SYSTEM V2.0.279
 Humidity: 65.0%
 Test Distance: 9.078m [K=1.0000]
 Remarks:

LUMINOUS DISTRIBUTION INTENSITY DATA

Test:U:219.40V I:0.0360A P:4.2100W PF:0.5300 Freq:50.00Hz Lamp Flux:489.012x1 lm		
NAME: Candle bulb	TYPE:	WEIGHT:
SPEC.:	DIM.:	SERIAL No.:
MFR.:	SUR.:	Shielding Angle:

Table--1

UNIT: cd

C (DEG) \ γ (DEG)	0	15	30	45	60	75	90	105	120	135	150	165	180	195	210	225	240	255	270
0	7.76	7.76	7.76	7.76	7.76	7.76	7.76	7.76	7.76	7.76	7.76	7.76	7.76	7.76	7.76	7.76	7.76	7.76	7.76
5	12.1	11.4	10.4	10.2	10.5	11.1	11.9	11.3	12.0	13.6	11.9	11.9	11.7	8.42	7.43	6.88	8.46	8.38	7.73
10	17.6	14.0	12.9	13.8	13.8	13.7	12.6	14.2	15.6	15.7	16.9	15.3	15.3	13.6	12.6	12.5	11.0	13.0	11.2
15	18.6	16.0	16.5	16.9	15.5	17.5	16.2	17.1	15.9	15.9	16.9	18.7	17.0	15.7	15.8	15.3	16.3	18.4	18.2
20	23.2	19.6	18.9	18.5	18.0	19.6	19.6	20.4	19.3	19.4	19.1	20.7	20.4	17.4	16.5	19.4	18.6	20.3	19.9
25	26.6	23.7	20.3	20.1	21.4	23.2	22.9	25.1	23.3	23.0	23.7	24.5	24.6	21.3	20.1	21.6	21.5	25.4	23.1
30	28.9	27.4	24.6	24.0	23.0	26.8	27.5	28.8	26.1	24.5	24.8	28.2	28.4	24.4	22.1	22.1	22.8	27.7	27.9
35	36.2	30.5	27.9	27.3	27.1	30.9	31.9	33.9	30.5	29.0	28.5	33.5	33.3	29.7	26.8	26.8	27.9	30.8	31.8
40	39.6	34.3	31.7	30.0	29.8	33.8	35.5	37.8	33.3	31.6	31.6	37.4	38.3	33.7	29.7	30.0	29.3	34.3	36.4
45	44.6	38.4	34.2	32.6	32.7	37.3	38.9	41.5	37.3	35.3	35.5	41.7	42.1	37.1	34.2	34.1	33.6	37.9	39.7
50	47.0	41.5	36.6	34.4	34.7	40.6	42.1	44.4	40.1	37.4	37.2	44.6	46.0	40.8	36.3	35.6	34.9	40.9	43.9
55	51.0	44.0	39.0	37.1	36.9	43.1	45.3	47.8	42.7	38.8	38.9	48.0	49.1	42.8	38.7	37.3	37.4	44.1	47.6
60	53.4	46.1	41.3	38.3	38.3	45.0	47.1	49.7	44.7	40.7	41.1	50.2	52.0	46.2	41.8	40.0	39.5	46.5	49.3
65	55.6	48.6	43.3	39.6	39.9	47.0	49.3	52.4	46.6	42.3	42.6	52.6	54.5	47.9	43.5	41.4	41.0	48.8	51.3
70	57.3	49.6	44.3	40.6	41.1	48.6	51.0	53.6	48.4	43.6	43.9	54.3	56.1	49.7	45.6	42.3	42.6	50.6	53.8
75	58.7	50.8	45.1	41.4	42.0	49.7	51.9	54.9	48.9	44.3	44.7	55.7	58.0	51.0	46.3	43.2	43.1	51.9	55.0
80	59.7	51.3	45.7	41.8	42.2	50.0	52.4	55.6	49.2	44.3	44.7	56.1	58.6	52.1	47.7	44.1	43.8	52.3	55.6
85	59.7	51.9	45.9	42.1	42.6	50.5	52.9	55.8	49.8	44.8	45.7	57.0	59.1	52.3	47.5	43.8	43.9	52.7	55.8
90	59.5	51.3	45.7	41.6	42.1	50.1	52.6	55.6	49.6	44.5	45.4	56.6	58.9	52.5	47.6	43.6	43.9	52.5	55.8
95	58.8	50.1	44.6	41.0	41.6	49.6	52.2	54.8	48.8	43.8	44.4	55.8	57.9	52.2	47.5	43.8	43.6	52.6	55.9
100	57.8	49.4	44.2	40.3	40.9	48.4	51.0	53.6	47.6	42.8	43.9	55.0	57.8	51.4	47.0	43.2	42.7	51.1	54.4
105	56.4	48.0	42.6	39.1	39.6	47.0	49.3	52.1	45.7	41.3	42.0	53.0	55.5	50.0	45.1	42.1	41.8	49.8	53.2
110	53.9	45.9	40.9	37.8	38.2	45.2	47.6	50.2	44.3	40.2	41.0	51.4	53.8	48.0	43.5	40.6	40.4	48.2	51.4
115	51.0	43.4	38.7	35.9	36.4	42.9	44.9	47.5	42.3	38.2	39.5	49.0	51.4	46.2	42.0	39.2	38.6	45.7	49.5
120	47.7	40.7	36.6	34.2	34.7	40.3	42.6	44.4	39.3	35.8	36.9	45.7	48.4	42.9	39.8	37.1	36.4	43.1	46.5
125	44.2	38.1	33.8	32.1	32.3	37.3	39.2	41.3	36.0	33.2	34.1	42.5	45.0	40.3	36.7	35.1	34.5	40.0	43.1
130	40.8	34.0	31.5	29.5	29.6	33.9	36.0	37.3	33.2	30.8	31.6	39.1	42.0	38.1	35.2	33.0	32.0	37.3	39.8
135	36.4	30.7	28.0	26.4	26.6	30.6	32.1	33.7	30.1	28.2	29.1	35.3	37.4	33.5	31.0	29.6	29.0	33.3	36.5
140	32.1	27.7	24.8	23.5	23.7	27.6	27.9	29.2	26.4	24.5	25.4	31.7	33.4	29.3	28.1	26.7	26.2	29.6	31.7
145	27.6	23.4	21.0	20.5	20.8	23.5	24.3	25.2	23.1	22.1	23.1	27.3	28.7	26.6	24.4	23.8	23.0	25.8	28.3
150	22.4	19.1	17.2	17.1	17.9	20.3	21.1	21.4	18.6	18.4	19.0	22.8	24.0	21.9	20.6	19.3	18.8	20.9	17.9
155	16.7	14.8	12.5	13.2	13.3	14.5	16.1	16.0	14.2	14.3	14.8	18.1	19.5	18.2	16.1	14.8	14.7	13.6	6.49
160	11.8	8.66	7.48	4.74	9.11	10.5	11.1	12.2	10.7	10.7	11.2	6.30	14.3	13.4	12.1	10.7	9.77	3.02	0.50
165	2.52	0.56	0.48	0.10	1.19	1.07	0.44	0.71	0.94	1.38	0.94	0.11	0.08	0.15	0.10	0.12	0.07	0.13	0.35
170	0.10	0.07	0.08	0.08	0.09	0.07	0.09	0.08	0.10	0.08	0.09	0.09	0.08	0.09	0.07	0.09	0.07	0.09	0.08
175	0.09	0.07	0.07	0.08	0.08	0.07	0.07	0.08	0.08	0.08	0.08	0.08	0.08	0.08	0.07	0.08	0.07	0.09	0.08
180	0.08	0.07	0.07	0.07	0.09	0.07	0.08	0.08	0.07	0.08	0.09	0.07	0.08	0.08	0.07	0.07	0.07	0.08	0.08

C Range: 0 - 360DEG
 C Interval: 15.0DEG
 Test Speed: HIGH
 Temperature:25.3℃
 Operators:杨守真
 Test Date:2025-04-27

γ Range: 0 - 180DEG
 γ Interval: 1.0DEG
 Test System:EVERFINE GO-2000A_V1 SYSTEM V2.0.279
 Humidity:65.0%
 Test Distance:9.078m [K=1.0000]
 Remarks:

LUMINOUS DISTRIBUTION INTENSITY DATA

Test:U:219.40V I:0.0360A P:4.2100W PF:0.5300 Freq:50.00Hz Lamp Flux:489.012x1 lm		
NAME: Candle bulb	TYPE:	WEIGHT:
SPEC.:	DIM.:	SERIAL No.:
MFR.:	SUR.:	Shielding Angle:

Table--2

UNIT: cd

C (DEG) γ (DEG)	285	300	315	330	345														
0	7.76	7.76	7.76	7.76	7.76														
5	8.32	7.47	7.92	9.05	11.8														
10	11.0	10.2	11.1	13.4	16.4														
15	17.8	16.8	18.4	19.2	19.9														
20	22.2	21.1	20.5	18.5	23.2														
25	24.5	23.4	22.0	22.2	26.9														
30	29.0	26.0	25.2	24.9	30.0														
35	34.1	30.0	30.3	30.9	35.0														
40	38.5	33.3	32.3	33.1	38.9														
45	42.0	37.9	36.2	38.0	44.2														
50	46.3	41.0	38.5	40.3	47.0														
55	50.3	44.2	41.5	42.8	50.9														
60	52.3	46.6	43.0	44.4	53.0														
65	53.9	48.4	45.3	46.6	55.6														
70	56.8	51.2	47.0	47.8	57.3														
75	58.3	52.4	47.7	48.7	59.0														
80	58.9	52.8	48.1	49.0	59.8														
85	58.5	52.7	48.1	49.0	59.8														
90	58.9	53.5	48.6	49.0	59.6														
95	58.7	52.7	47.6	48.2	58.7														
100	57.8	52.2	46.7	47.7	57.6														
105	56.1	50.8	45.4	46.4	55.9														
110	54.1	49.2	44.1	45.1	54.0														
115	51.6	46.7	41.8	43.4	51.0														
120	48.9	44.3	39.3	40.7	48.4														
125	45.4	41.9	37.3	37.7	43.8														
130	41.7	38.2	34.7	35.6	41.3														
135	37.8	34.9	31.5	32.4	36.4														
140	33.5	30.7	27.5	28.1	32.5														
145	29.2	24.9	24.1	24.6	27.7														
150	12.3	11.9	11.6	11.1	17.7														
155	13.2	15.8	14.7	7.33	4.15														
160	0.29	0.26	0.36	5.72	11.10														
165	0.14	2.47	2.49	2.34	2.36														
170	0.10	0.09	0.10	0.08	0.10														
175	0.08	0.08	0.09	0.08	0.09														
180	0.08	0.08	0.08	0.08	0.10														

C Range: 0 - 360DEG
 C Interval: 15.0DEG
 Test Speed: HIGH
 Temperature:25.3°C
 Operators:杨守真
 Test Date:2025-04-27

γ Range: 0 - 180DEG
 γ Interval: 1.0DEG
 Test System:EVERFINE GO-2000A_V1 SYSTEM V2.0.279
 Humidity:65.0%
 Test Distance:9.078m [K=1.0000]
 Remarks: